

# Wildlife Management System in Nunavut

ᓄᓚᓃᑦ ᓂᓴᓚᑦ

Government of Nunavut

ᐱᓴᓂᓕᓂᓴᓃᑦ

Department of Environment



Moshi Kotierk

ᓂᓴᓂᓴᓃᑦ

Social Science Researcher

ᐱᓄᓴᓂᓴᓃᑦ ᓴᓂᓴᓂᓴᓃᑦ



# About Nunavut

- One of Canada's newest jurisdictions – created in 1999 due to a 1993 Land Claims Agreement
- Just over 34,000 people in 2013. About 84% are Inuit.

# About Nunavut

- Since the creation of Nunavut, the Government has been working to be more and more representative of their public.
- Push to be more and more aligned with Inuit Societal Values, sometimes known as *Inuit Qaujimajatuqangit*.

# Nunavut Wildlife Management

- NLCA creates a wildlife management system that is
  - Governed by and implement conservation principles
  - Fully acknowledges and reflects the primary role of Inuit in wildlife harvesting
  - Serves and promotes the long-term economic, social and cultural interests of Inuit harvesters
  - As far as practical, integrates the management of all species of wildlife
  - Invites public participation and promotes public confidence, particularly amongst Inuit, and
  - Enables and empowers the NWMB to make wildlife management decisions pertaining thereto.



Social

Economic

Cultural

Natural Balance

Interests



Habitat Protection

Wildlife

Wildlife Management

People

Participation

Vital, healthy populations



Restored, revitalized populations

Confidence

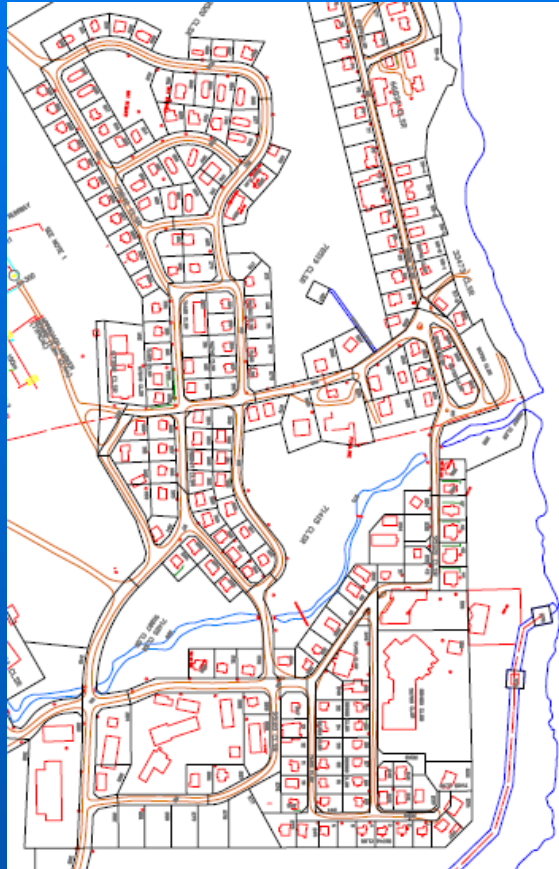


“The basis of effective government is public confidence...”





# Baffin Island Caribou Public Opinion



ᓄᓗᓕᑲ	ᓱᓲᓂᑦ
ᐃᑲᐱᐊᓴᓂᑲ	9
ᓱᓄᓕᐱᐊᑦ	14
ᑲᓄᓲᓂᑲ	11
ᐱᓂᓴᓂᑲ	6
ᐃᑲᓂᑲ	15
ᐃᓴᑲᓂᑲ	15
ᓱᓴᓲᓂᑦ	7
ᐱᓄᓲᓂᑲ	10
ᓲᓂᓲᓂᑲ	17
ᓴᓱᓲᓂᑲ	5
ᑲᓂᓲᓂᑦ	109

• ᐱᓄᓲᓂᑲ - ᐊᐱᓂᑲ 2013







# Baffin Island Caribou Results

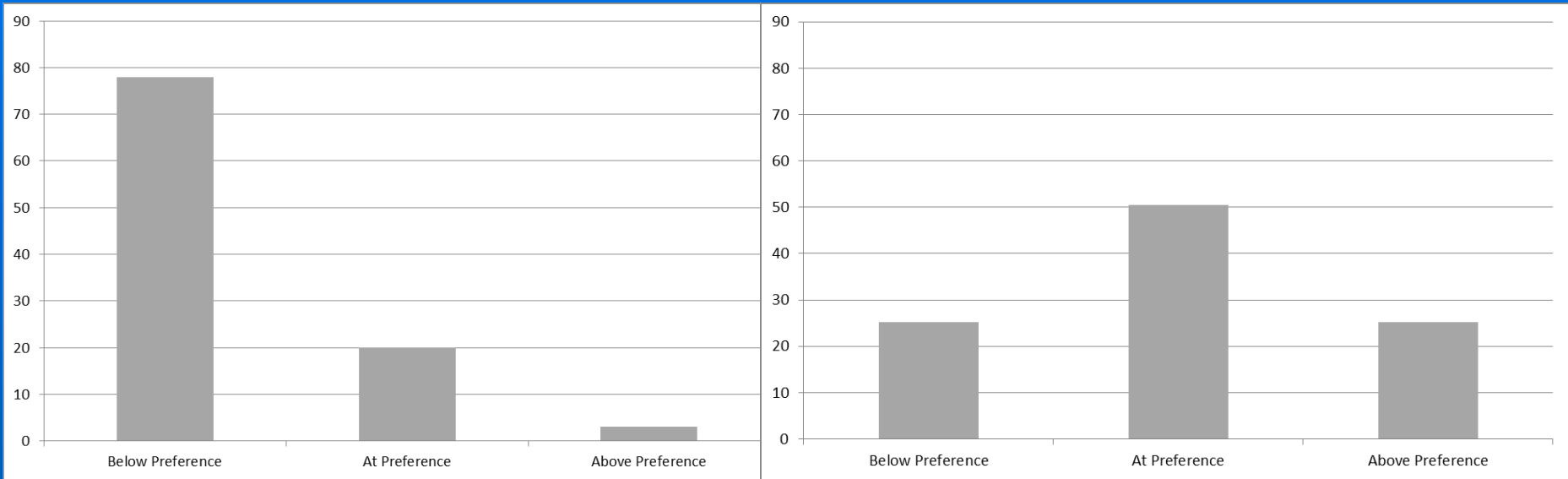
– Ask people about:

- Wildlife Management / ᓄᑦᑲᑎᓕᑲᓄᑦᑭᑦ
- Priorities / ᐱᑲᑲᑎᑲᑦ
- Caribou



# Caribou Population Size

ᐅᐅ ᐱᐱᐱᐱᐱᐱ





Social

Economic

Cultural

Natural Balance

Interests



Habitat Protection

Wildlife

Wildlife Management

People

Participation

Vital, healthy populations



Restored, revitalized populations

Confidence



“The basis of effective government is public confidence...”



Thank you!

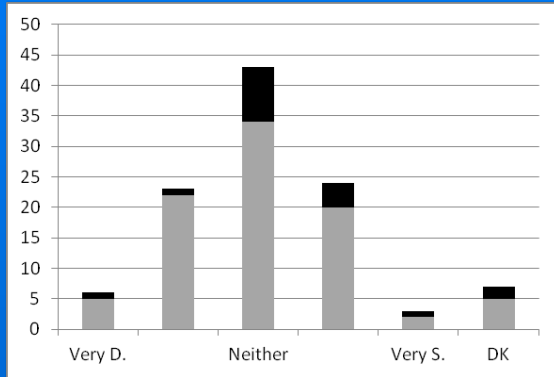
# Baffin Island Caribou Results

– Ask people about:

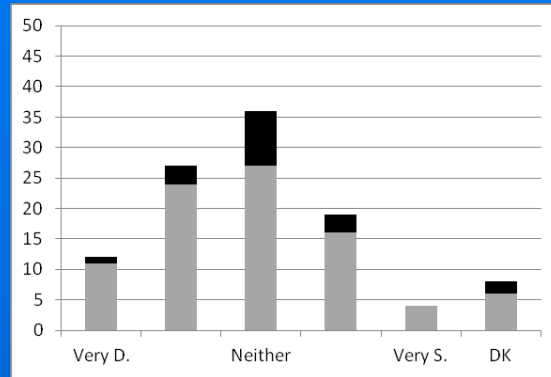
- Wildlife Management / ᓄᑦᑲᑎᓕᑲᓄᑦᑭᑦ
- Priorities / ᐱᑲᑲᑎᑲᑦ
- Caribou / ᑦᑲᑲᓄ



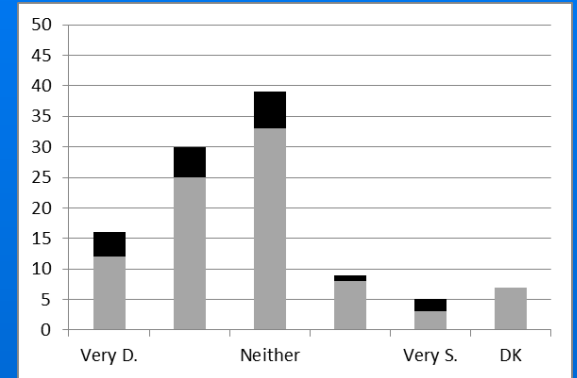
# Wildlife Management



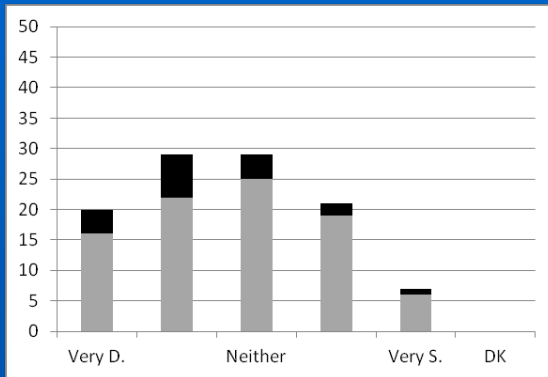
Wildlife Management



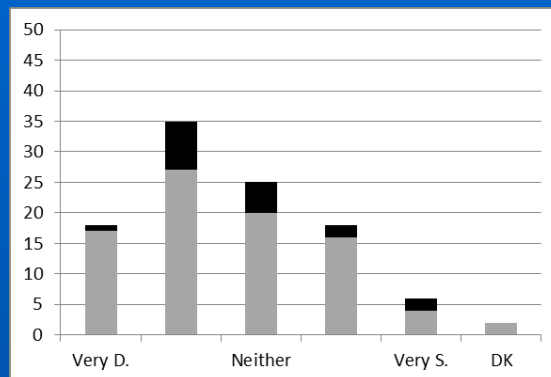
Environmental Assessment



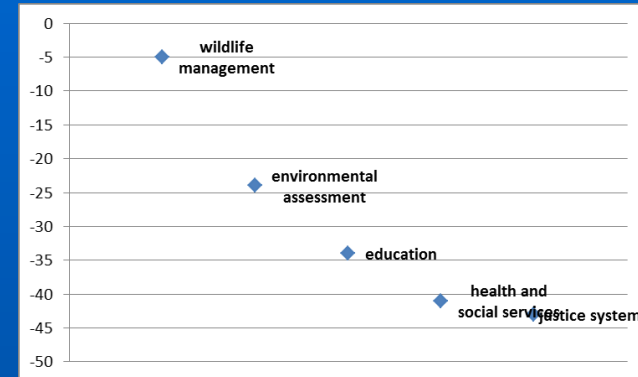
Justice System



Educational System

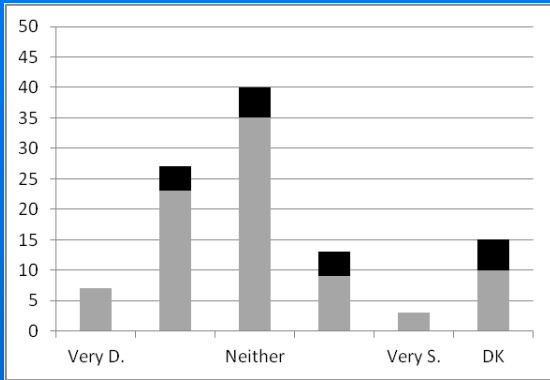


Health and Social Services

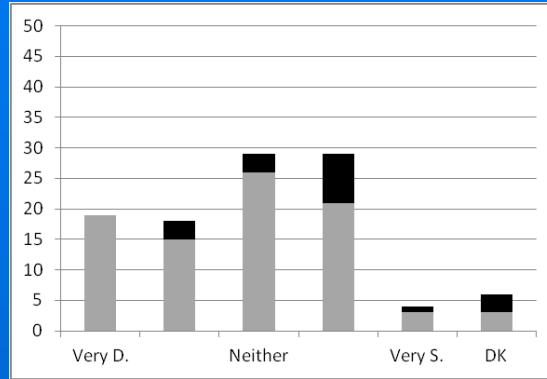


Overall

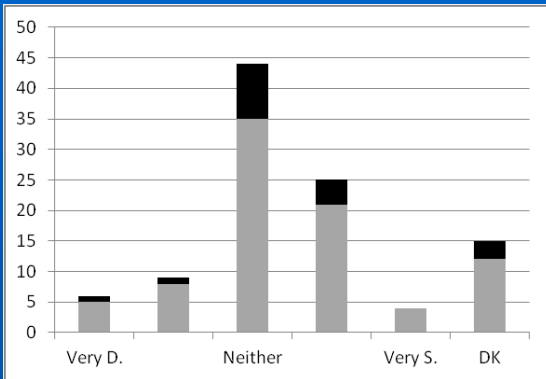
# Caribou Management



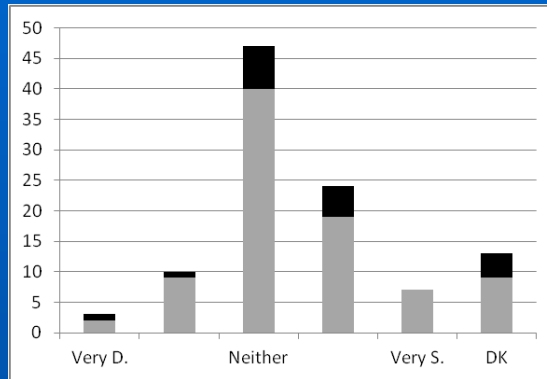
Caribou



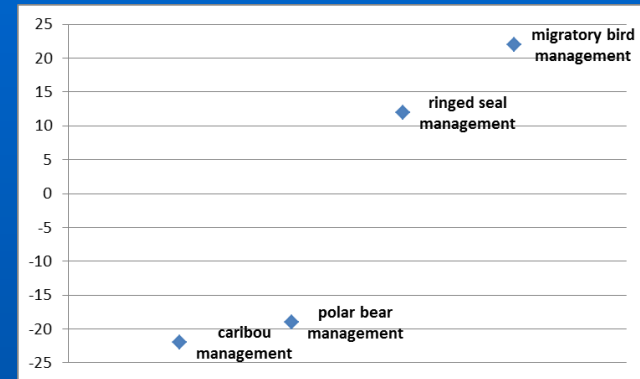
Polar Bear



Ringed seal

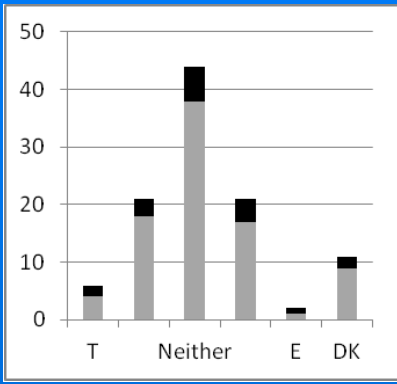


Migratory bird

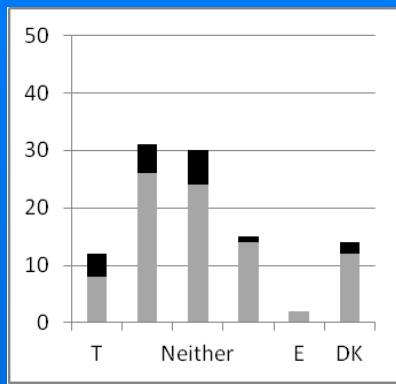


Overall

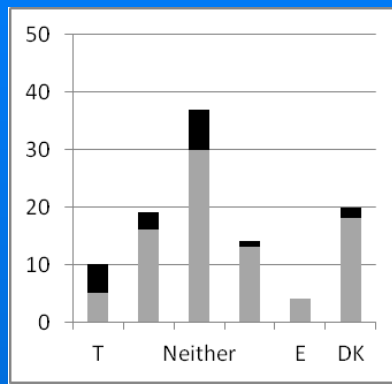
# Wildlife Performance



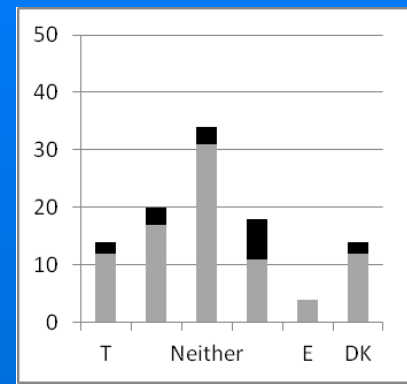
GN



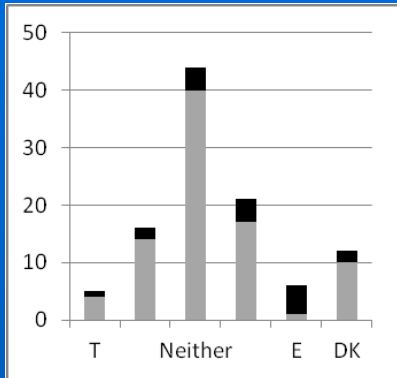
Legislators



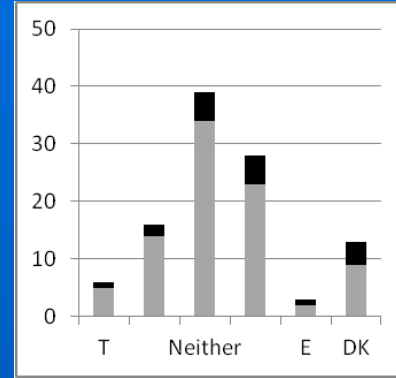
Bureaucrats



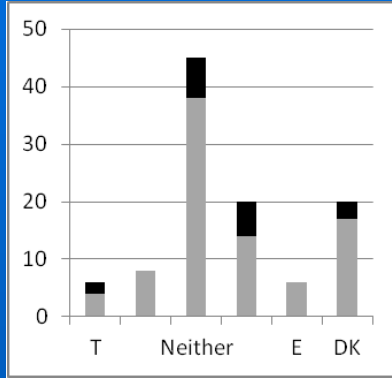
Scientists



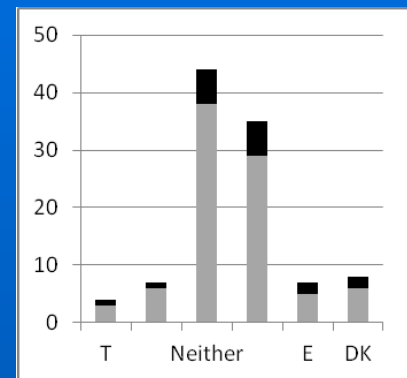
COs



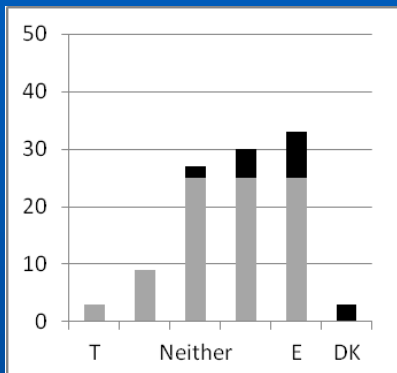
NWMB



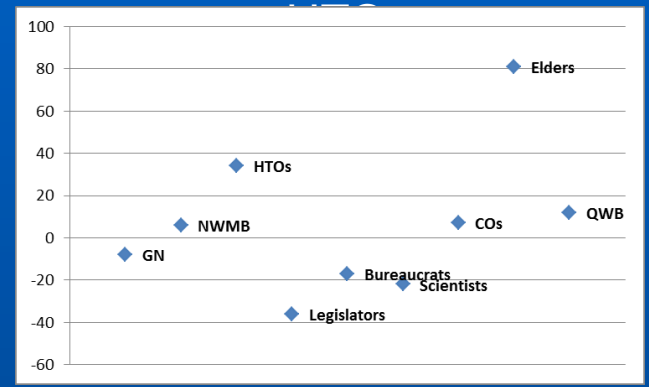
QWB



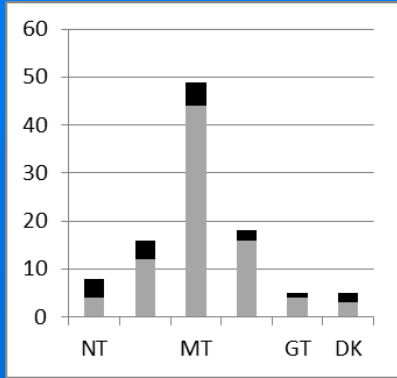
Elders



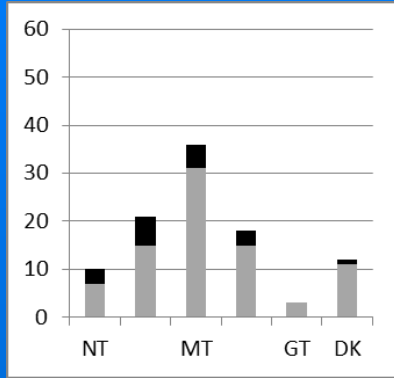
Overall



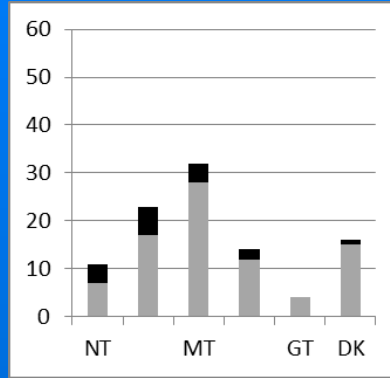
# Wildlife Trust



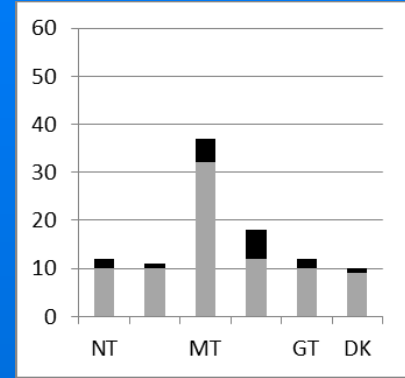
GN



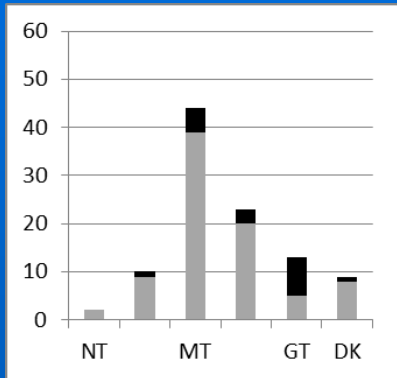
Legislators



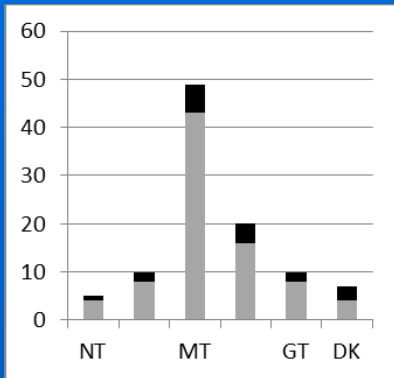
Bureaucrats



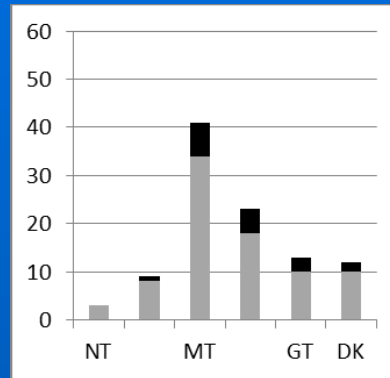
Scientists



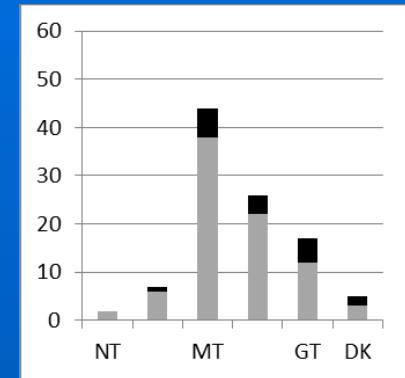
COs



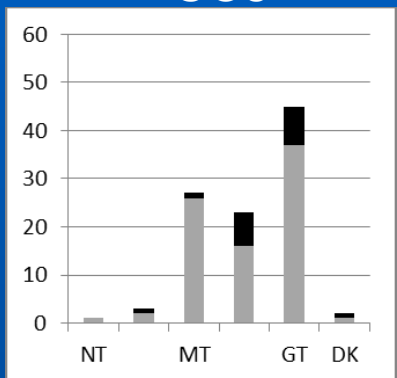
NWMB



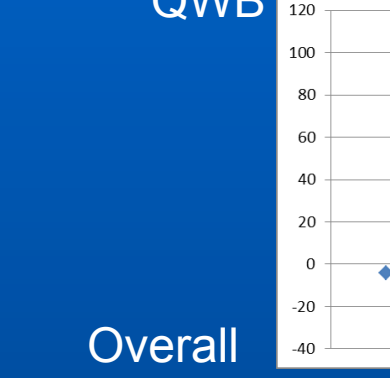
QWB



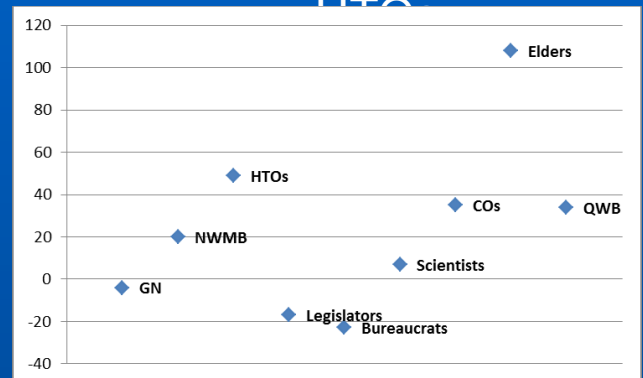
HTOs



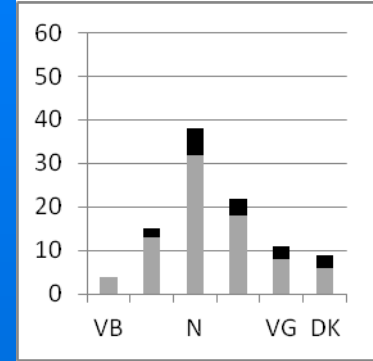
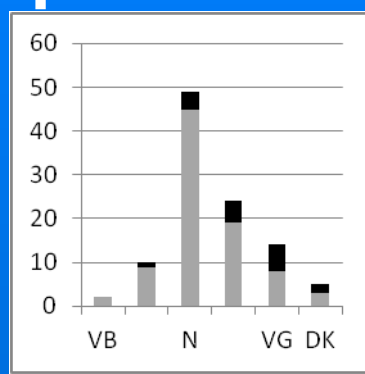
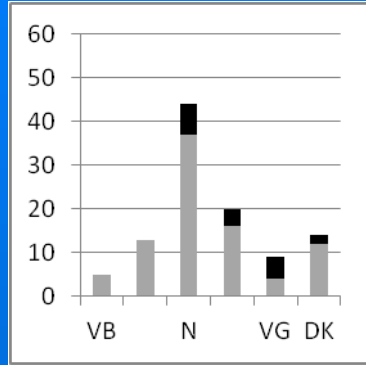
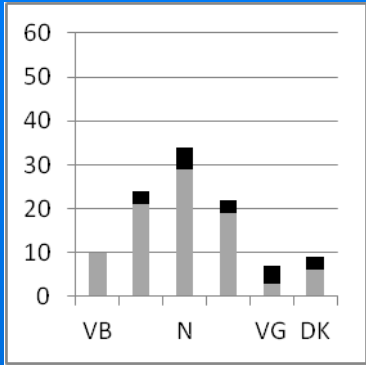
Elders



Overall



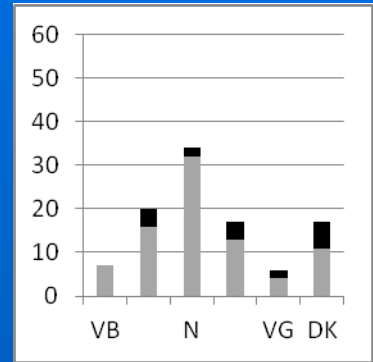
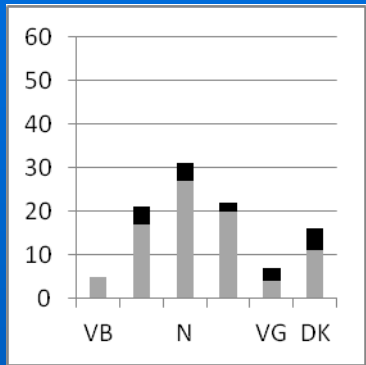
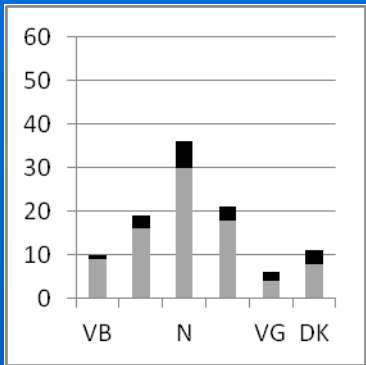
# Participation



Providing information Accurate information

Understandable information

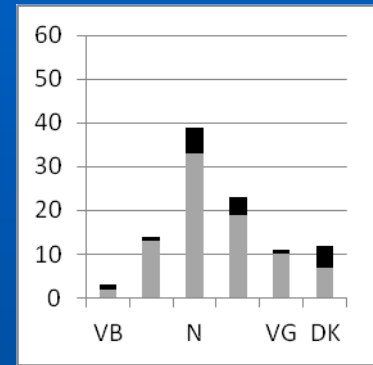
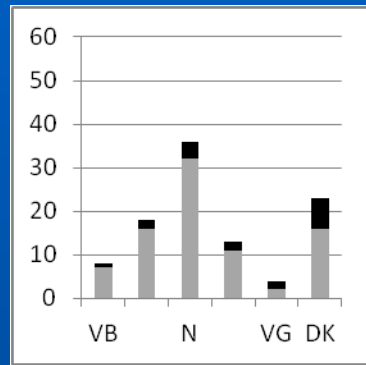
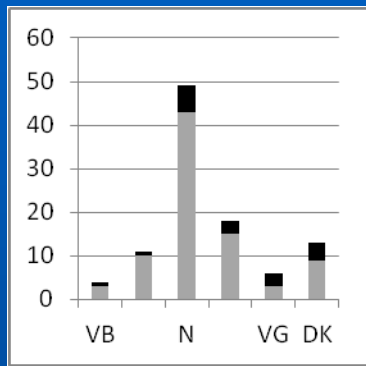
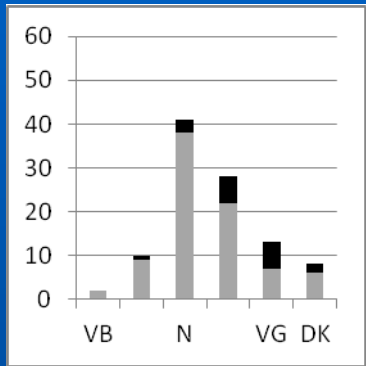
Earning trust



Easy involvement

Understand concerns

Response to concerns



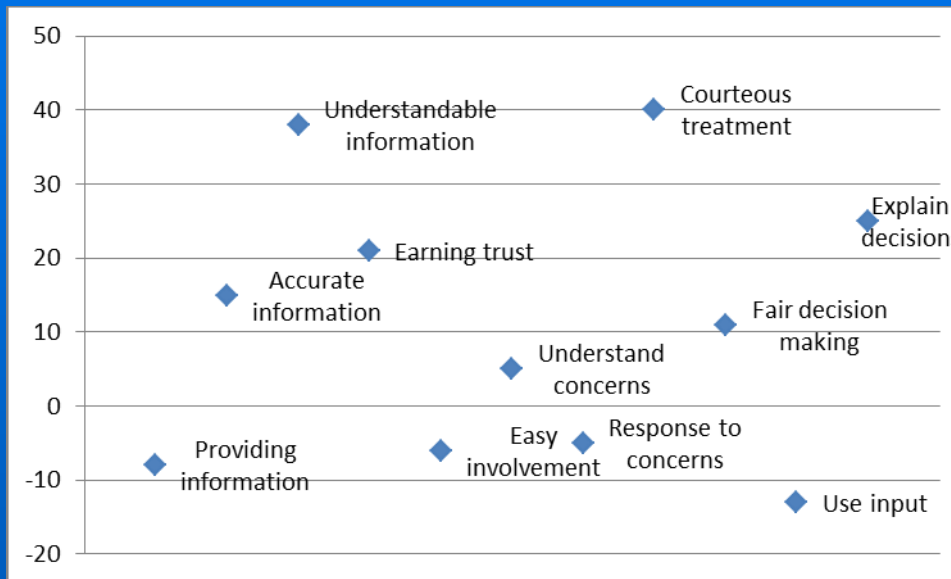
Courteous treatment

Fair decision making

Use input

Explain decisions

# Participation



Overall







# Baffin Island Caribou Results

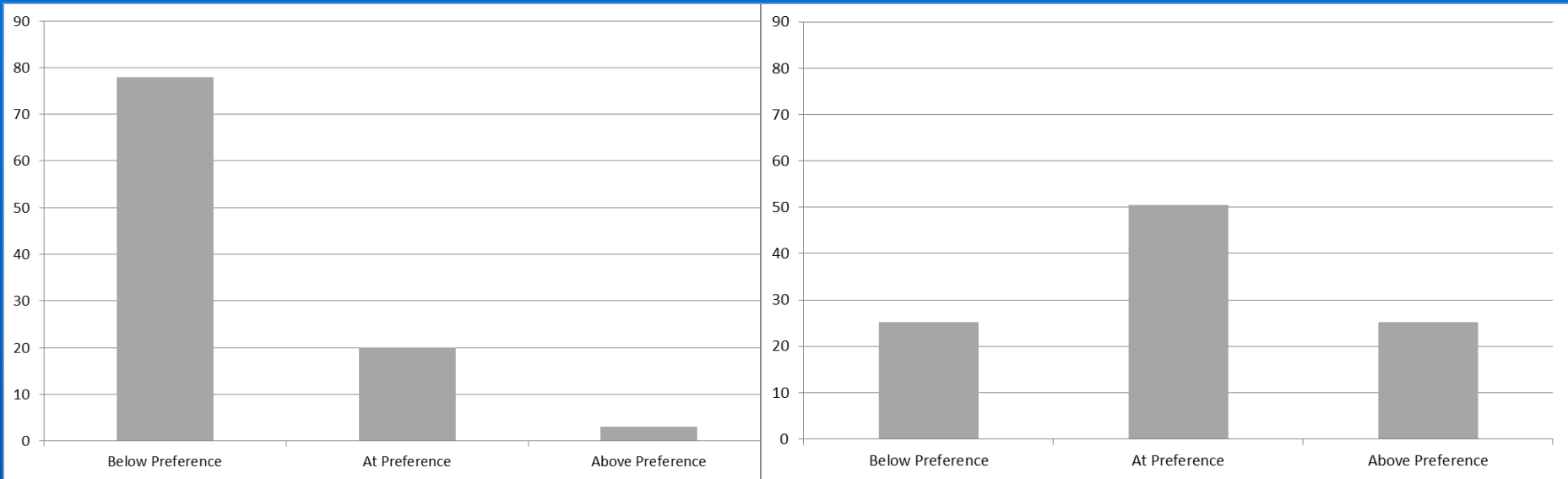
– Ask people about:

- Wildlife Management / ᓄᑦᑲᑎᓕᑲᓄᑦᑭᑦ
- Priorities / ᐱᑲᑲᑎᑲᑦᑭᑦ
- Caribou



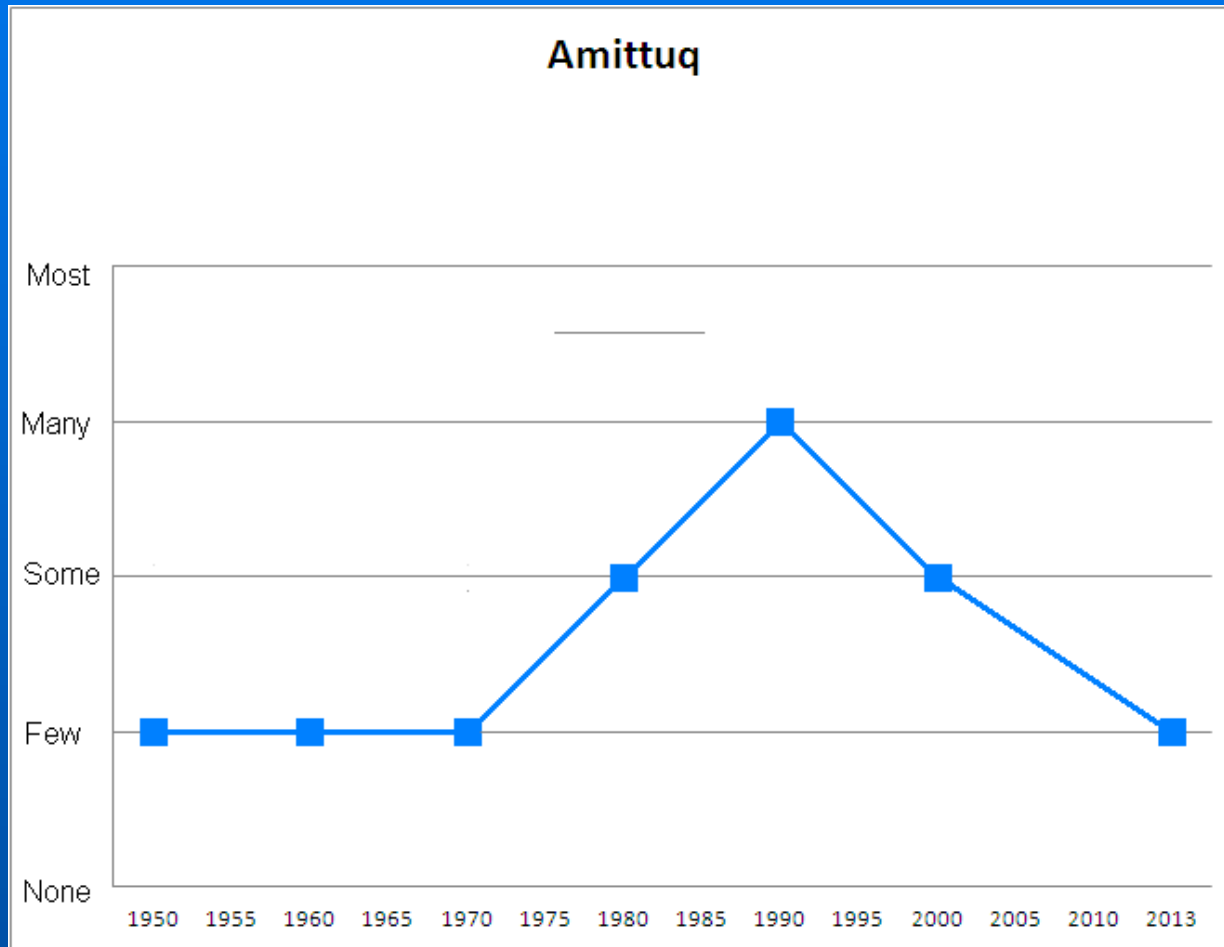
# Caribou Population Size

ᐅᐅ ᐱᐱᐱᐱᐱᐱ



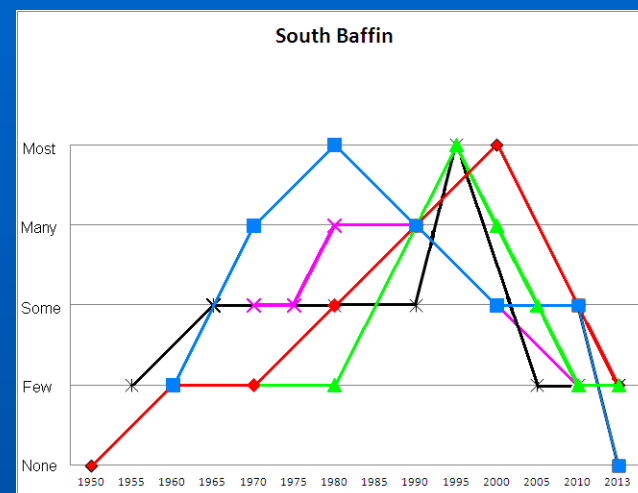
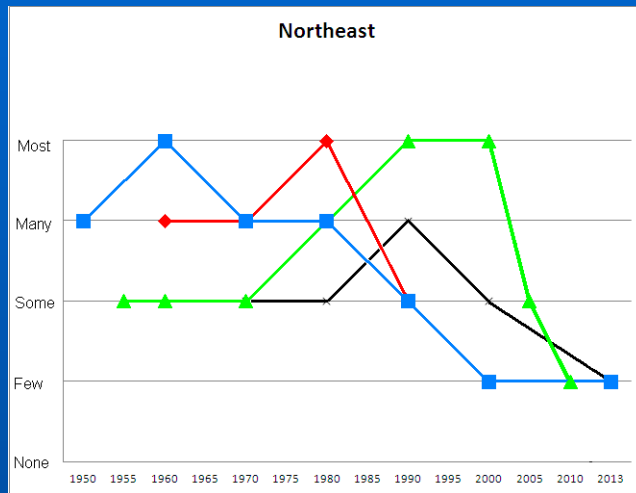
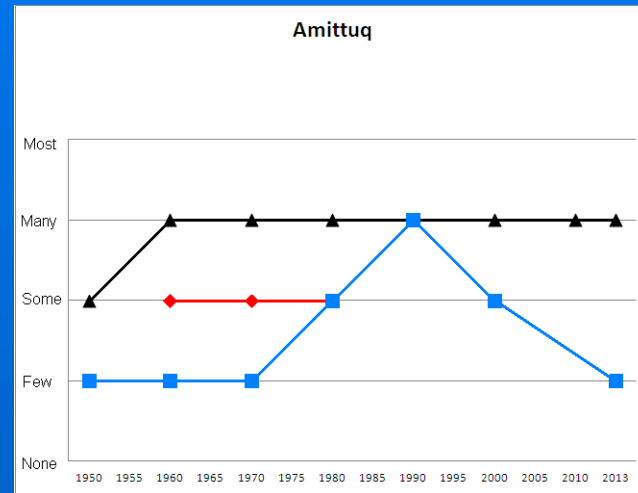
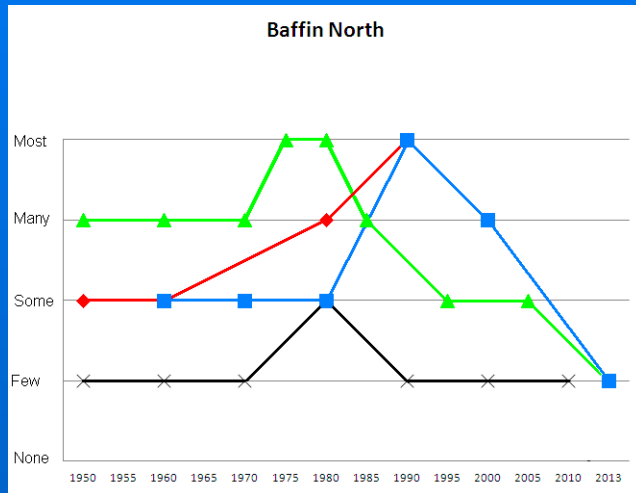
# Caribou Population Size

ᐃᐅᐅ ᐱᐅᐅᐅᐅᐅ



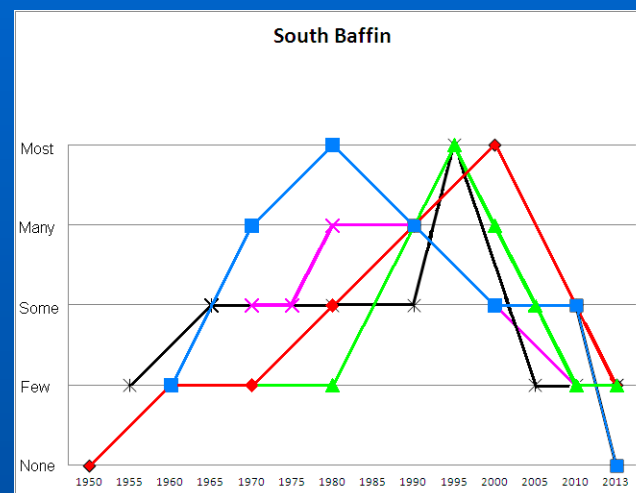
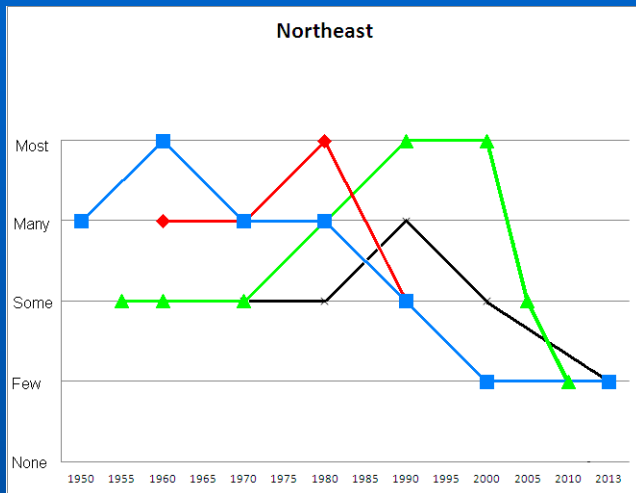
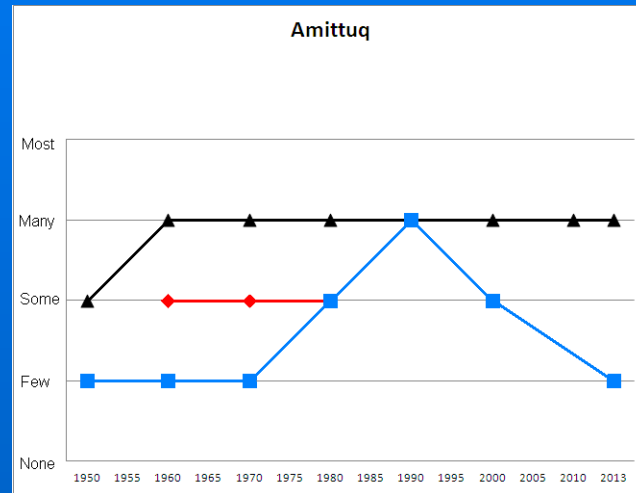
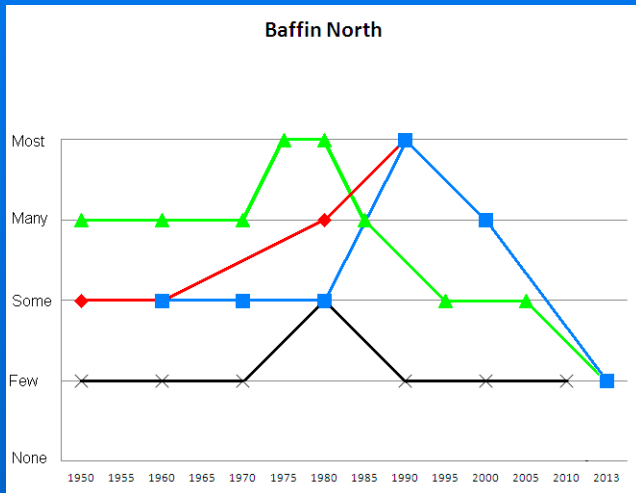
# Caribou Population Size

## ᐅᐅ ᐅᐅ ᐅᐅ ᐅᐅ ᐅᐅ ᐅᐅ

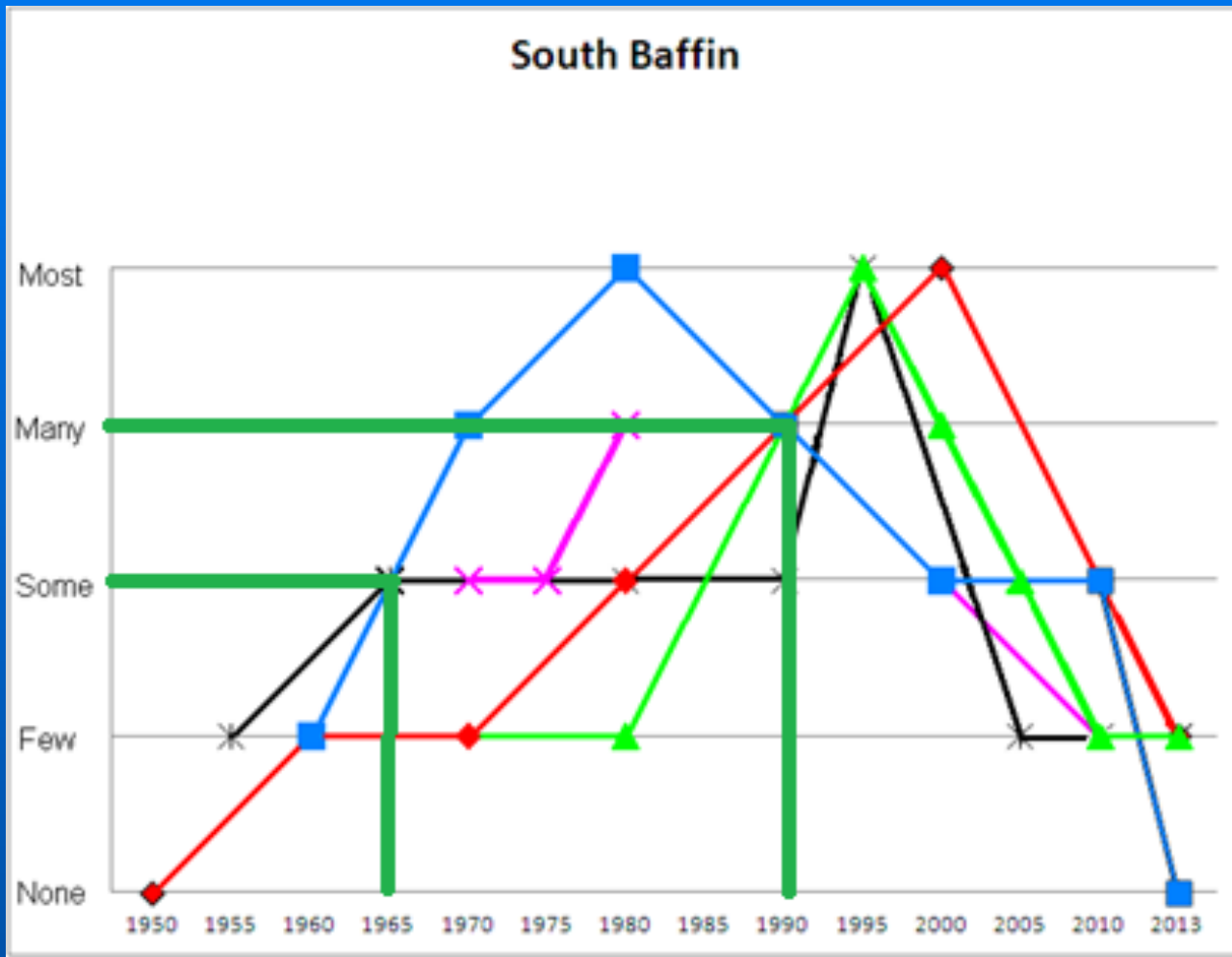


# Caribou Population Size

## ᐅᐅ ᐅᐅ ᐅᐅ ᐅᐅ ᐅᐅ ᐅᐅ



# Caribou Population Size







# Concern Level Reasons

Not concerned		
Reason	Public	Inuit
It's a cycle. Caribou are fewer but they will return	9	8
Caribou naturally shift distribution	5	5
I'm not a hunter	2	2
Caribou will still exist	2	2
We don't control/manage wildlife	2	2
Considering whole island	2	2
It doesn't really affect me.	2	
Not concerning	1	1
Caribou are fewer	1	1
Caribou are someplace else	1	1

Concerned		
Reason	Public	Inuit
Caribou are fewer	11	4
Caribou are food	5	5
Resource development	4	3
Have to go greater distances now	2	2
Climate change	2	1
Caribou will still exist	1	1
Caribou sales and shipping	1	1
It's a cycle. Caribou are fewer but they will return	1	1
Future generations have to know as well that they're good food	1	1
It has been a long while since they've shown up in our land	1	1



Natural Balance



Economic



Social

Cultural



Habitat Protection



Wildlife Management

Wildlife

Interests



People

Participation

Vital, healthy populations



Restored, revitalized populations



Confidence



“The basis of effective government is public confidence...”



# Principles of Conservation

- The principles of conservation will be interpreted and applied giving full regard to the principles and objectives and the rights and obligations set out in this Article.
- The principles of conservation are:
  - The maintenance of the natural balance of ecological systems within Nunavut;
  - The protection of wildlife habitat;
  - The maintenance of vital, healthy, wildlife populations capable of sustaining harvesting needs.
  - The restoration and revitalization of depleted populations of wildlife and wildlife habitat.



# Precaution / ደንብ ጥቅም

ፈጠራ ለጥቅም ለማድረግ የሚያስፈልገው ግንኙነት ማረጋገጥ:

- The need for a decision,
- A risk of serious or irreversible harm,
- A lack of full scientific certainty.

የግንኙነት ግንኙነት ማረጋገጥ ለማድረግ:

1. It is legitimate that decisions be guided by society's chosen level of protection against risk
2. A high degree of transparency, clear accountability and meaningful public involvement are appropriate