



Welcome remarks

Geir Huse

Institute of Marine Research

*Implementation of the Ecosystem Approach
to Management in the Arctic, Bergen 25-27 June*

The Institute of Marine Research

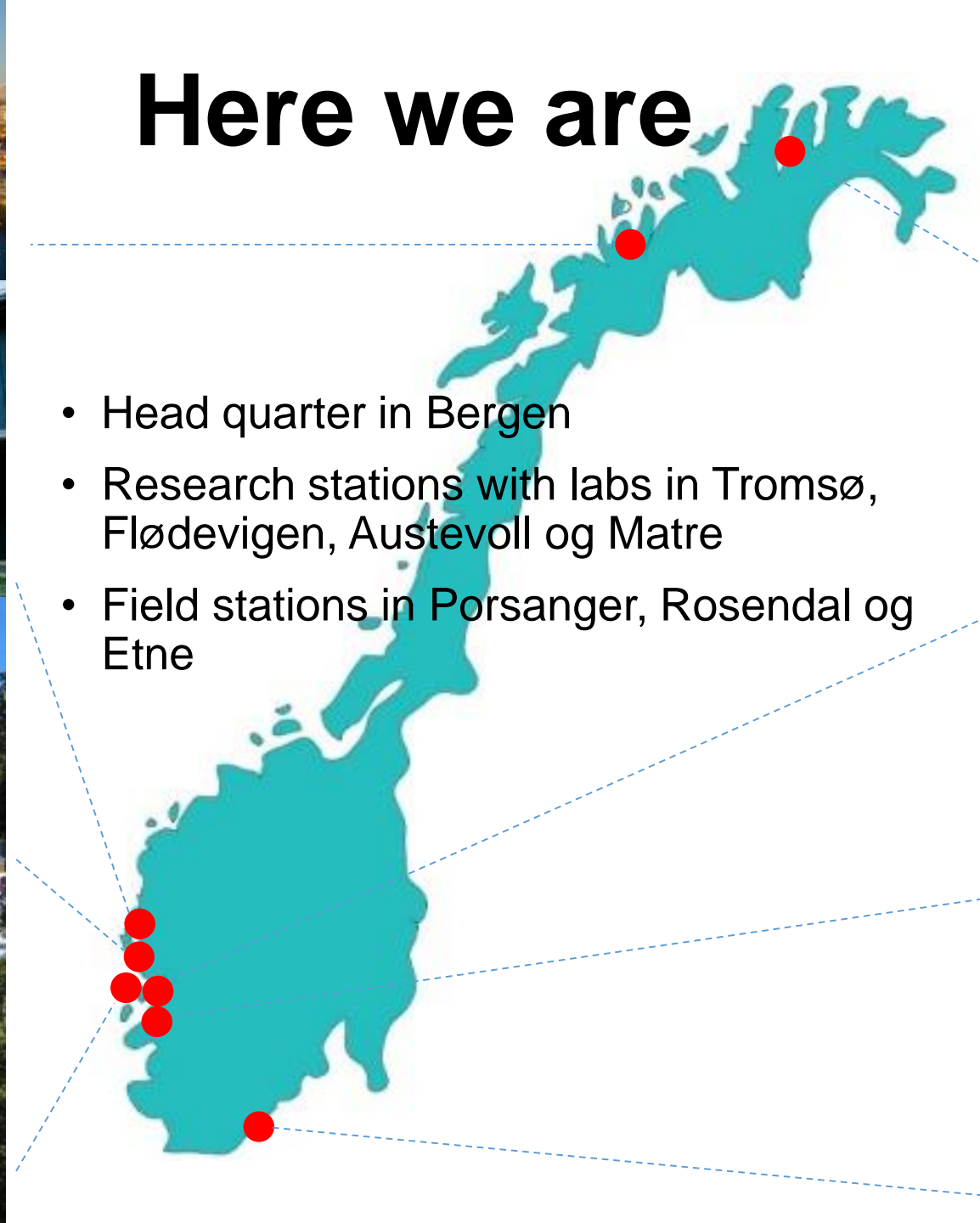
-A national advisory research institute



Here we are



- Head quarter in Bergen
- Research stations with labs in Tromsø, Flødevigen, Austevoll og Matre
- Field stations in Porsanger, Rosendal og Etne





Kronprins Haakon



G.O. Sars



Johan Hjort

Our research vessels



Dr. Fridtjof Nansen



Kristine Bonnevie



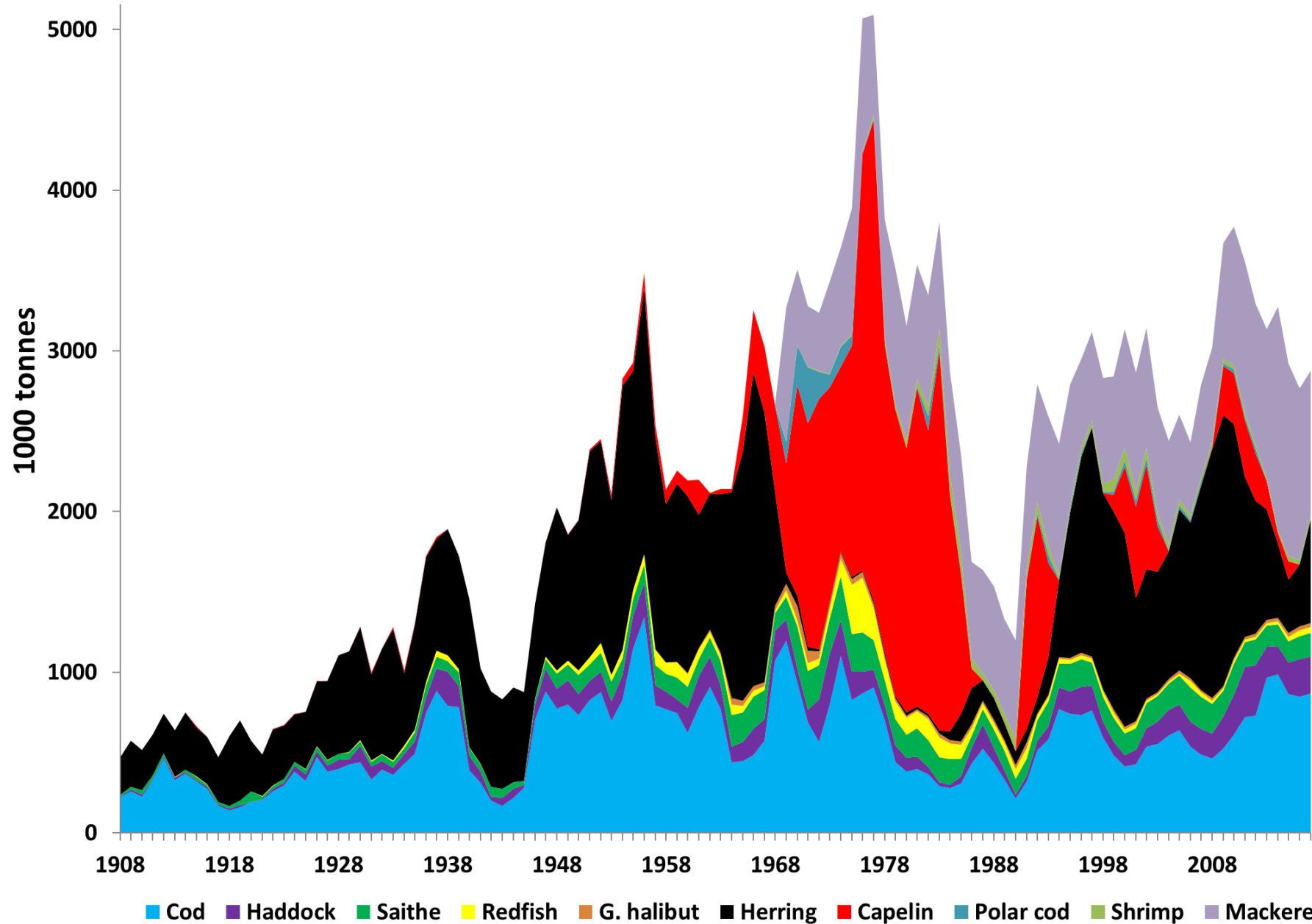
G M Dannevig



Hans Brattström



Catches from the Norwegian and Barents Seas

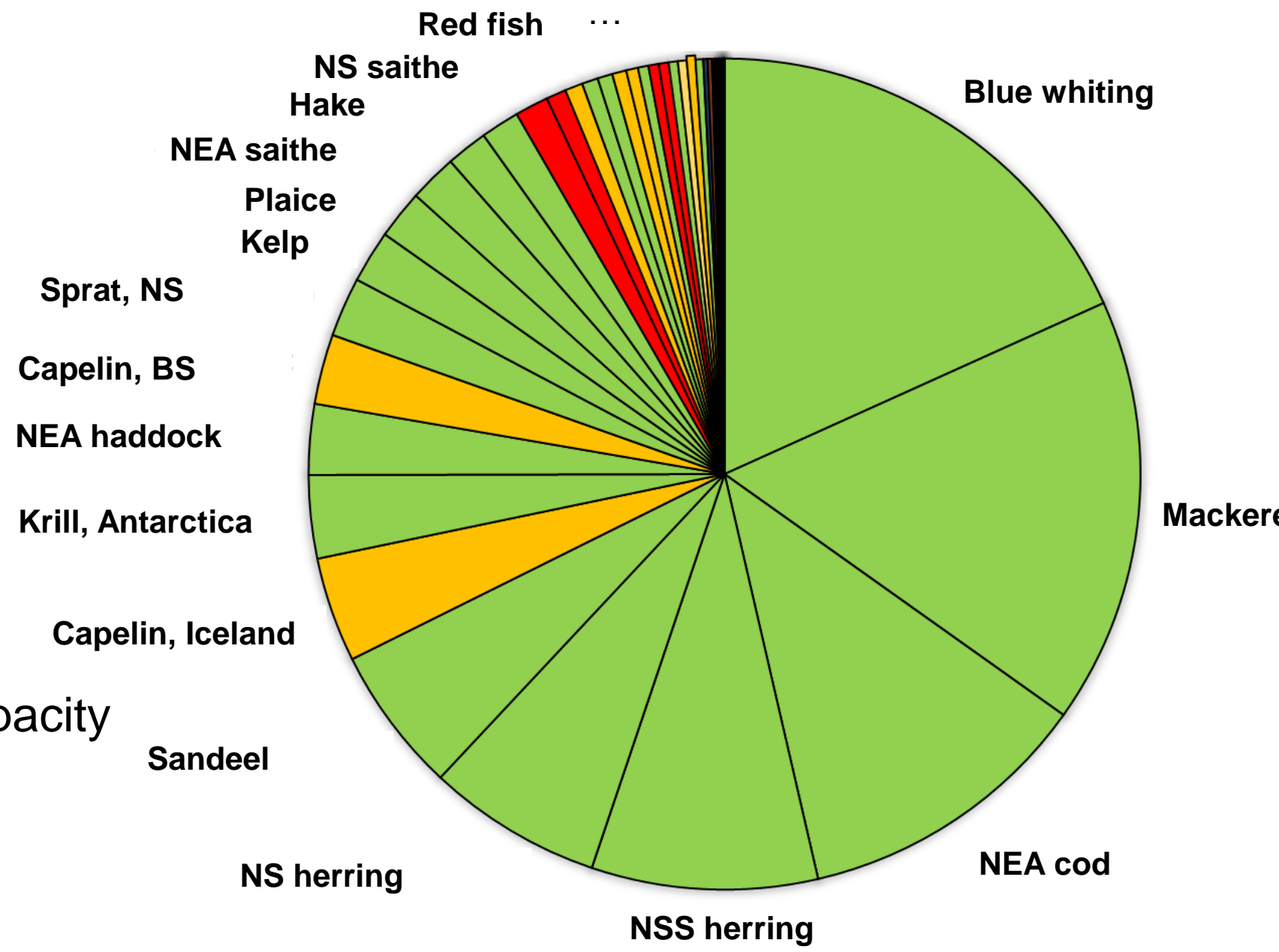


From Haug & al 2017

State of «our» commercial fish stocks

- Relative catch distribution
- Colour indicate state of spawning stock:

- Full reproductive capacity
- Increased risk
- Reduced reproductive capacity



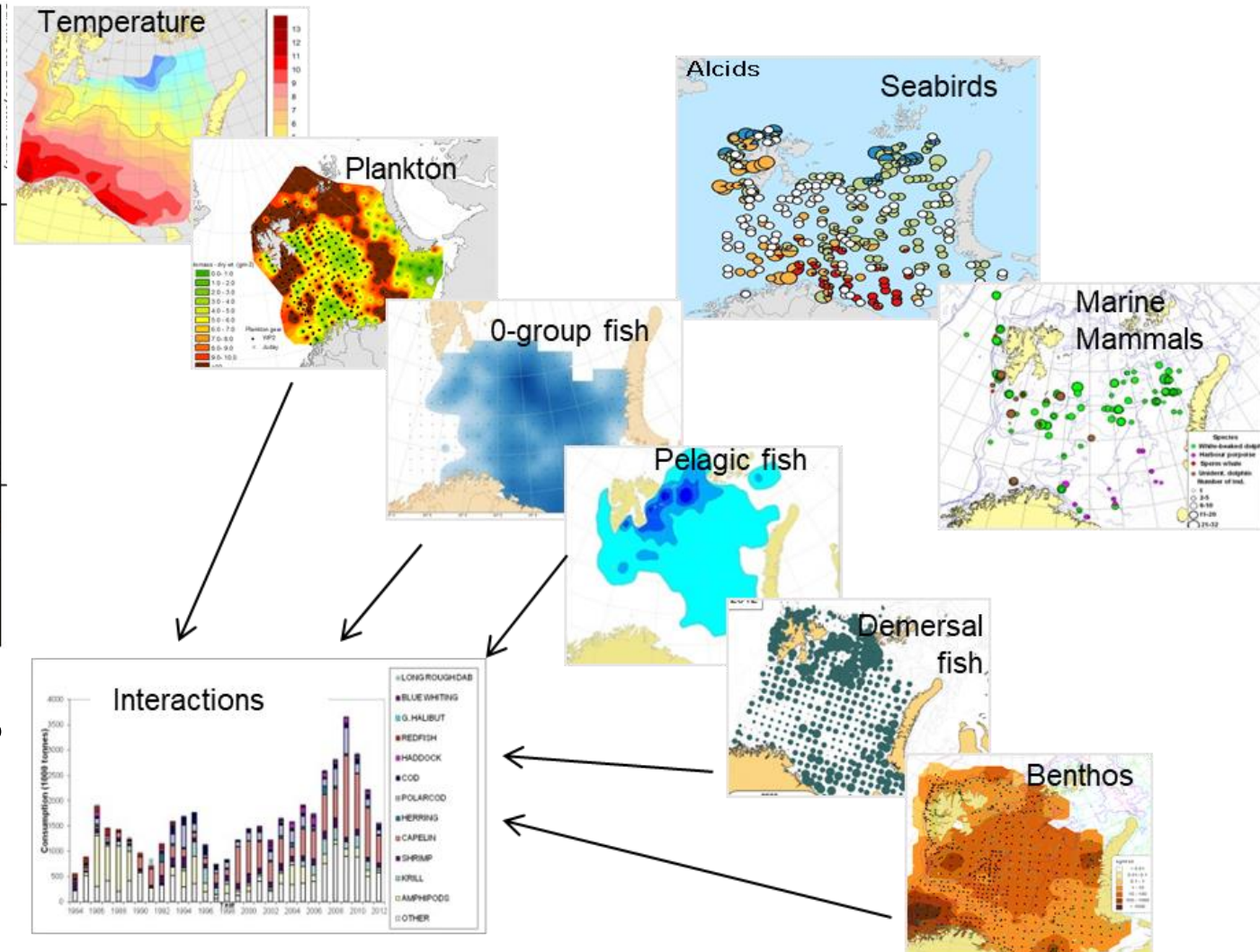
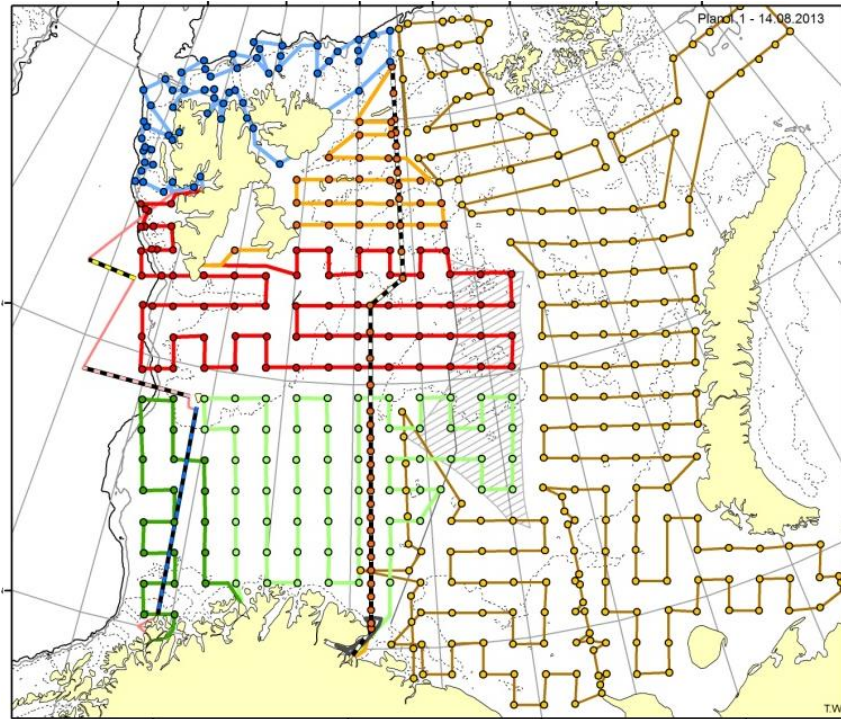
**Ecosystem based
fisheries
management**

**Ecosystem based
management**



Ecosystem survey in the Barents Sea

IMR (Norway)/PINRO (Russia)



- More than 400 stations per year
- Monitoring ecosystem state



Fish community moving northwards in the Barents Sea due to regional warming 2004



ICES IEA groups

Arctic Ocean

Barents Sea

Norwegian Sea

Baltic Sea

North Sea

Western European Shelf Seas

Northwest Atlantic Regional Seas

Mediterranean Sea



Have a great meeting in Bergen!

