

MARITIME SHIP TRAFFIC IN THE CENTRAL ARCTIC OCEAN HIGH SEAS AS A CASE STUDY WITH INFORMED DECISIONMAKING

PAUL ARTHUR BERKMAN

Science Diplomacy Center, EvREsearch LTD / MIEP MGIMO
United Nations Institute for Training and Research (UNITAR)
Program on Negotiation, Harvard Law School, Harvard University
23 Woodrise Road, Falmouth, Massachusetts 02540, United States

GREG FISKE

Woodwell Climate Research Center
149 Woods Hole Road, Falmouth, Ma 02540 United States

JACQUELINE M. GREBMEIER

Chesapeake Biological Laboratory
University of Maryland Center for Environmental Science
146 Williams Street, Solomons, MD 20688 United States

ALEXANDER N. VYLEGZHANIN

Department of International Law, MGIMO University (Moscow State Institute of International Relations)
76 Prospect Vernadskogo, Moscow, 119454 Russian Federation

30 March 2021

ABSTRACT

This chapter applies the baseline satellite record of maritime ship traffic in the Central Arctic Ocean (CAO) High Seas from 1 September 2009 through 31 December 2018 as a case study with informed decisionmaking to operate across a ‘continuum of urgencies’. Starting with questions to generate data as stages of research, the geospatial analyses herein involve cloud-based innovations with the space-time cube and binned queries to interpret the dynamics of maritime ship traffic based on the vessel flag states, types and sizes within the CAO High Seas and surrounding Exclusive Economic Zones (EEZ). The data are transformed into evidence for decisions in view of the institutions that produce governance mechanisms and built infrastructure. The next level of action with science diplomacy is to introduce options (without advocacy), which can be used or ignored explicitly, contributing to informed decisionmaking by the institutions. These next-generation Arctic marine shipping assessments reflect socioeconomic drivers of change in the Arctic Ocean, as revealed by the ecology of maritime ship traffic in all EEZ and High Seas regions north of the Arctic Circle with lessons from the CAO High Seas, balancing national interests and common interests. Objective integration with biophysical parameters, as demonstrated with satellite sea-ice records, further reveals ship-ice dynamics in the CAO High Seas, which are central to the ‘Pan-Arctic ecosystem of maritime ship traffic’ across the data-evidence interface with research and action into informed decisions. The holistic (international, interdisciplinary and inclusive) analyses herein of Arctic Ocean satellite records complement the intent of the “*precautionary approach*” embodied in international law, as provided by the 2018 *Agreement to Prevent Unregulated High Seas Fisheries in the Central Arctic Ocean* that is pending ratification with Arctic and non-Arctic states. Working up the pyramid of informed decisionmaking with the CAO High Seas as a case study, options (without advocacy) are introduced to be precautionary short-to-long term with science diplomacy. In the CAO High Seas area beyond national jurisdictions, maritime ship traffic is highlighted with global inclusion as a platform for common-interest building under the Law of the Sea, to which all Arctic states and Indigenous peoples “*remain committed*” as they shared in their 2013 *Vision of the Arctic*.

KEY WORDS:

Automatic Identification System (AIS), governance, infrastructure
Law of the Sea, precautionary approach, ship-ice hypothesis, socio-economic

1. INTRODUCTION

1.1 Observing Pan-Arctic Maritime Ship Traffic with Satellites

Maritime ship traffic underscores the socioeconomic dynamics of commercial, scientific and other forms of human presence in the Arctic Ocean, which was the overarching rationale to design *Next-Generation Arctic Marine Shipping Assessments* with satellite Automatic Identification System (AIS) records (Table 1). AIS signal transmission (NAVCEN 2016) is mandated by the International Maritime Organization (IMO 2020a) for ships larger than 300 gross tonnes engaged on international voyages, as implemented globally through the *International Convention for the Safety of Life at Sea, 1974*, as amended (SOLAS 2020). Accelerating from the Arctic Marine Shipping Assessment report approved by the Arctic Council (AMSA 2009) with the satellite record of ship movements north of the Arctic Circle from 2009 forward (Berkman et al. 2020a) – this chapter builds on the baseline satellite record of Pan-Arctic maritime ship traffic from 1 September 2009 to 31 December 2016, which can be accessed through the Arctic Data Center supported by the US National Science Foundation (Berkman et al. 2020b). In this chapter, additional satellite AIS data are included through 31 December 2018 for the region north of the Arctic Circle. These maritime ship traffic data provide the framework to generate an objective assessment of the socioeconomic system (associated with science, technology and innovation) coupled with the biophysical system (associated with environmental factors and biological productivity) in the Central Arctic Ocean (CAO) High Seas beyond national jurisdictions under Law of the Sea (see Chapter 1 in this book).

TABLE 1: NEXT-GENERATION ARCTIC MARINE SHIPPING ASSESSMENTS¹

ATTRIBUTE	ARCTIC MARINE SHIPPING ASSESSMENTS (AMSA)	
	AMSA (2009)	Next-Generation
Sampling Period	2004	2009-present
Data Sources	Arctic States Individually and with the Arctic Council	Diverse Government and Commercial Automatic Identification System (AIS) Sources
Observation Coverage	Point, Regional	Point, Regional and Pan-Arctic
Observation Scope	Ground-Based	Ground-Based and Satellite
Observation Frequency	Inconsistent over Space and Time	Synoptic and Continuous (from minutes to decades)
Ship-Type Designations	Variable National Designations	Standardized International Designations
Individual Ship Attributes	Inconsistent and Incomplete	Consistent and Comprehensive
Analytical Capacity	Limited Granularity and Questions	Open-Ended Granularity and Questions
Science-Diplomacy Contributions	Scenarios and Negotiated Recommendations	Holistic Evidence and Options (without advocacy)
Informed Decisionmaking ²	Governance Mechanisms	Operations, Built Infrastructure and Governance Mechanisms

¹ Updated from Berkman et al. (2020a), involving Automatic Identification System (AIS) data collected by polar-orbiting satellites. ² Informed decisions operate across a ‘continuum of urgencies’ short-to-long term (Berkman et al. 2020c), as elaborated subsequently (Berkman 2020a,b).

Satellite AIS records enable synoptic patterns, trends and processes with maritime ship traffic to be interpreted on a Pan-Arctic scale objectively in relation to complementary satellite records with the

biophysical system, including with sea-ice coverage (NSIDC 2020) and ocean color patterns as a representation of primary production (Comiso et al. 2020). These maritime ship traffic analyses complement the Synoptic Arctic Survey (Anderson et al. 2018, Ashjian et al. 2019, Paasche et al. 2019) that is underway with international and interdisciplinary inclusion to “*generate a comprehensive dataset that allow for a complete characterisation of Arctic hydrography and circulation, carbon uptake and ocean acidification, tracer distribution and pollution, and organismal and ecosystem functioning and productivity.*”

For example, as the sea-ice has been diminishing, the centroid of Arctic maritime ship traffic has shifted 300 kilometers north-eastward based on the continuous satellite AIS record from 2009-2016 (NASA Earth Observatory 2018), enhancing the monthly interpretation of satellite AIS data from 2010-2014 north of the Arctic Circle (Eguíluz et al. 2014), in view of Pan-Arctic ship traffic predominating in the Norwegian and Barents Seas. Relationship between sea-ice and ship traffic similarly has been interpreted with the Arctic Ship Traffic Database (ASTD) through the Protection of the Arctic Marine Environment (PAME) working group of the Arctic Council (PAME 2020a), revealing a 75% increase in the distance sailed by all ships from 2013-2019 in the area of the Polar Code (IMO 2017a), which largely excludes areas in the Norwegian and Barents Seas because they are perennial open water areas. The observed maritime traffic increase appears to be related to destination shipping, for example, associated with Liquid Natural Gas (LNG) in the Yamal Peninsula and associated logistic chains prior to the COVID-19 pandemic.

Additional assessments with satellite AIS records of Arctic maritime ship traffic also are emerging, as with models of ship emission inventories (Winther et al. 2014) and intercalibration with land-based AIS records (Wright et al. 2019). The goal of this chapter is to demonstrate the fundamental necessity of next-generation Arctic marine shipping assessments (Table 1) to implement “precautionary” approaches with decisionmaking for Arctic Ocean management (see Chapter 1 in this book), as anticipated with ratification of the *Agreement to Prevent Unregulated High Seas Fisheries in the Central Arctic Ocean* (CAO High Seas Fisheries Agreement 2018).

1.2 Methodology of Informed Decisionmaking

Assessments of maritime ship traffic as well as any other system parameters in the Arctic Ocean – or elsewhere at local-global scales – involves data to answer questions. Diverse methods may be applied to generate the data, including from the natural sciences and social sciences as well as Indigenous knowledge, considering science in an holistic (international, interdisciplinary and inclusive) manner as the ‘study of change’ (Berkman et al. 2020c). Questions create capacities to consider change short-term to long-term – to make “informed decisions” that operate across a ‘continuum of urgencies’ (Berkman et al. 2017; Berkman 2020). For example, the underlying questions with Arctic maritime ship traffic in this chapter relate to patterns of diminishing sea ice in the Arctic Ocean (Thoman et al. 2020), which may be non-linear (Eisenmann and Wettaufer 2009).

Progressing from questions to data represents stages of research in the *Pyramid of Informed Decisionmaking*, where the apex goal is an informed decision (see Chapter 1 in this book). However, to produce an informed decision requires evidence, which are distinct from data because decisionmaking institutions are involved (Donnelly et al. 2018). The distinction is that data are generated with diverse

methods to answer questions with research whereas evidence is for decisions with action, integrating the data in the context of the decisionmaking institutions in a purposeful manner (Berkman et al. 2020a):

Equation 1: DATA + INSTITUTION = EVIDENCE

Importantly, evidence is insufficient for decisions, only compelling decisionmaking institutions to act, if they so choose. Beyond evidence – with science diplomacy – options (without advocacy), which can be used or ignored explicitly, are required for informed decisionmaking (Berkman et al. 2017, 2020c; Berkman 2020a,b). In this sense, evidence and options represent stages of action, informing decisions about governance mechanisms and built infrastructure as well their coupling to achieve progress with *“sustainable development and environmental protection,”* which are the *“common Arctic issues”* established by the eight Arctic states and six Indigenous Peoples Organizations with the high-level forum of the Arctic Council (Ottawa Declaration 1996).

In the Arctic Ocean as elsewhere, the challenge is to operate with research and action, building common interests across the data-evidence interface to produce informed decisions. The basic objective of this chapter is to illustrate how satellite AIS data can be integrated into evidence for informed decisionmaking (see Chapter 1 in this book), applying the CAO High Seas Fisheries Agreement as an institutional case study (Vylegzhanin et al. 2020).¹

2. ARCTIC OCEAN SHIP TRAFFIC WITHIN LAW OF THE SEA ZONES

2.1 Synoptic Geospatial Analyses with Satellite Big-Data

This chapter continues to elaborate as well as utilize geospatial methodologies with the baseline of satellite AIS data from the Arctic Ocean, involving cloud computing and binned solutions with the space-time cube – based on user-defined polygons – as described with regional lessons from the Bering Strait and Barents Sea in Volume 1 of the INFORMED DECISIONMAKING FOR SUSTAINABILITY book series (Berkman et al. 2020a). Briefly, the same standardized methods and satellite AIS data are applied to herein from 1 September 2009 through 31 December 2018 north of the Arctic Circle with 21,005 ships in total, as interpreted from the Maritime Mobile Service Identity (MMSI) of each unique vessel across more than 173,000,000 AIS records. The cloud-based methods with Google Big Query enable queries to be run across the entire dataset within seconds at \$5 USD per terabyte processing costs and \$0.02 USD per gigabyte storage costs (Google 2020).

These cloud-based methodologies accentuate the geospatial questions that can be addressed with user-defined scalability about maritime ship traffic changes over time and space in the Arctic Ocean, applying satellite AIS records north of the Arctic Circle. The framework question to illustrate in this chapter

¹ The *Agreement to Prevent Unregulated High Seas Fisheries in the Central Arctic Ocean* was signed on 3 October 2018 by “Canada, the People’s Republic of China, the Kingdom of Denmark in respect of the Faroe Islands and Greenland, Iceland, Japan, the Republic of Korea, the Kingdom of Norway, the Russian Federation, the United States of America and the European Union” (European Commission 2018), but has yet to enter into force as of 31 December 2020 because one of the ten signatories (i.e., People’s Republic of China) has yet to provide its instrument of ratification (Arctic Council 2020).

involves the Law of the Sea zones (see Chapter 1 in this book) across the entire Arctic Ocean with its centrality at 90° North latitude, considering the North Pole as a “Pole of Peace” (Gorbachev 1987):

What is the distribution of maritime ship traffic in the Exclusive Economic Zones (EEZ) of the Arctic states and the High Seas that exist beyond national jurisdictions in the Arctic Ocean (i.e., north of the Arctic Circle)?

Answering this framework question provides the first rendering of maritime ship traffic within, between and beyond national jurisdictions north of the Arctic Circle comprehensively (Fig. 1). In addition, this synoptic profile of maritime ship traffic within jurisdictional zones highlights regional granularity in a Pan-Arctic context that can be interpreted with new satellite AIS observations, providing an indicator of socioeconomic change continuously across seasons and years in the Arctic Ocean.

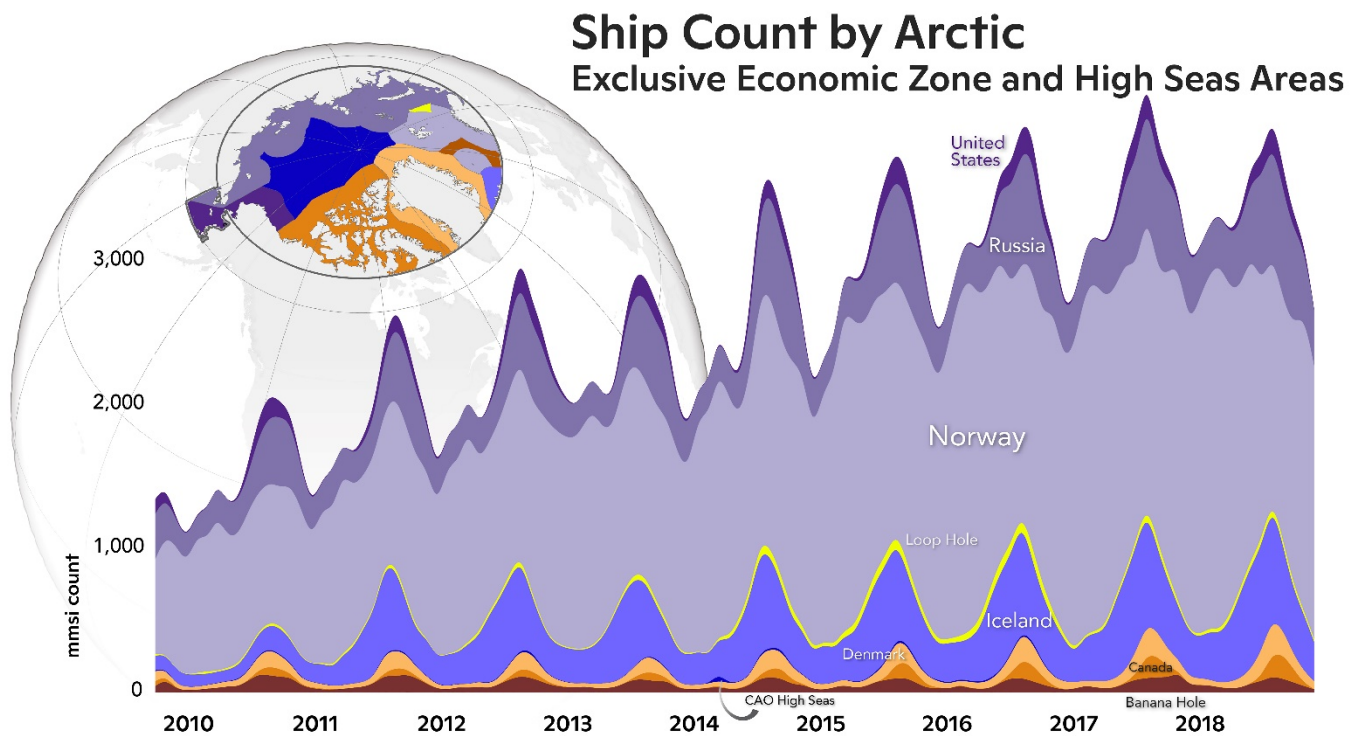


FIGURE 1: PAN-ARCTIC ECOSYSTEM OF MARITIME SHIP TRAFFIC AMONG LAW OF THE SEA ZONES IN THE ARCTIC OCEAN derived from satellite Automatic Identification System (AIS) big-data with synoptic circumpolar coverage within the Exclusive Economic Zones (EEZ) of Arctic coastal states as well as High Seas areas beyond national jurisdictions from 1 September 2009 through 31 December 2018 north of the Arctic Circle, including the Bering Strait Region as analyzed previously (Berkman et al. 2020a). These data represent more than 173,000,000 AIS records with 21,005 unique ships during the 2009-2018 observation period. Longitudes range from 0°EW in the Barents Sea with surrounding Norwegian and Russian EEZ to 180°EW through the Bering Strait with surrounding United States and Russian EEZ. Additional mapping of High Seas areas north of the Arctic Circle is shown in Harrison et al. (2020) for the Banana Hole in the Norwegian Sea and Loop Hole in the Barents Sea as well as the Central Arctic Ocean.

The satellite AIS data from 2009-2018 reveal seasonality of maritime ship traffic within the EEZ of Arctic coastal states (Canada, Denmark, Iceland, Norway, Russian Federation, United States) as well as within the three High Seas areas north of the Arctic Circle (“Banana Hole” in the Norwegian Sea, Central Arctic Ocean and the “Loop Hole” in the Barents Sea). The high number of ships within the Barents Sea

is known as this region is largely open water throughout the year, further explaining the relatively low-amplitude seasonal variation in maritime ship traffic within the Norwegian EEZ.

As a socioeconomic indicator within Law of the Sea zones, maritime ship traffic reflects the relative change of human presence and interests across the Arctic Ocean. Increasing trends of ship traffic are suggested in all jurisdictional regions, but more clearly in those jurisdictions where there are larger numbers of unique ships (Fig. 1). These analyses further reveal the relative dimensions and rates of change with ship traffic across these Arctic maritime jurisdictions from 2009-2018 (Table 2).

TABLE 2: REGIONAL TRENDS OF MARITIME SHIP TRAFFIC WITHIN JURISDICTIONS DEFINED BY THE INTERNATIONAL FRAMEWORK OF THE LAW OF THE SEA, DERIVED MONTHLY FROM FIGURE 1

LAW OF THE SEA ZONE	ARCTIC OCEAN AREA	MONTHLY NUMBER OF UNIQUE SHIP DAYS ¹	REGRESSION LINE ² [Y=RATE OF CHANGE (YEAR) ± CONSTANT]
Exclusive Economic Zone	(areas within national jurisdictions)		
	Canada	2541	$y=0.012x-474.48$ ($r^2=0.086$)
	Denmark	7563	$y=0.169x-638.22$ ($r^2=0.129$)
	Iceland	40644	$y=0.109x-4181.8$ ($r^2=0.322$)
	Norway	176048	$y=0.420x-15928.0$ ($r^2=0.813$)
	Russian Federation ³	43950	$y=0.088x-3279.1$ ($r^2=0.246$)
	United States ³	6836	$y=0.010x-333.4$ ($r^2=0.023$)
High Seas	(areas beyond national jurisdictions)		
	Banana Hole	6426	$y=0.012x+7.7$ ($r^2=0.001$)
	Central Arctic Ocean	494	$y=0.002x-89.0$ ($r^2=0.076$)
	Loop Hole	3275	$y=0.011x-447.6$ ($r^2=0.306$)

¹ Derived with satellite Automatic Identification System (AIS) data north of the Arctic Circle from the monthly totals of unique ships in each area during a daily observation period from 1 September 2009 through 31 December 2018 (i.e., combination of 111 monthly totals), as a measure of relative maritime ship traffic across jurisdictional zones in the Arctic Ocean. ² Derived from the monthly number of unique ships, as shown daily during the observation period (Fig. 1), noting the same unique ships may appear in multiple months. ³ The Bering Strait Region with the Russian Federation and United States includes area south of the Arctic Circle (Fig. 1), as analyzed and defined previously (Berkman et al. 2020a).

The focus herein with the CAO High Seas involves the jurisdictional zone where there is the slowest increase in maritime ship traffic to date (Table 2). Nonetheless, with precaution, the CAO High Seas underlies the potential for a trans-Arctic shipping route when there is open water across the North Pole (Smith and Stephenson 2013, Stevenson et al. 2019), introducing all manner of questions about “*logistical, geopolitical, environmental, and socioeconomic impacts*” (Bennett et al. 2020).

2.2. International Maritime Ship Traffic Patterns and Trends in the CAO High Seas

With maritime ship traffic in an ecological context – studying the home (‘eco’) – individual ships can be considered as representatives of ‘ship species’ with known attributes (e.g., flag state, type and size). Similarly, aggregations within a ship species underscore the dynamics of ‘maritime ship traffic populations,’ which are interacting among ‘maritime ship traffic communities’ characterized by their diversities within

bounded habitats. These habitats are illustrated regionally by Law of the Sea zones that can be interpreted objectively from satellites over time within the ‘Pan-Arctic ecosystem of maritime ship traffic’ (Fig. 1). In an economic context – managing the home – the patterns, trends and processes associated with the Pan-Arctic ecosystem of maritime ship traffic become fundamental to informed decisionmaking about operations, governance mechanisms and built infrastructure in the Arctic Ocean (Table 1).

While there are relatively few ships in the CAO High Seas to (Fig. 1), this jurisdictional region is globally important because it illustrates balancing between national interests and common interests (Berkman and Young 2009; Berkman and Vylegzhanin 2013; Berkman et al. 2020c; Berkman 2010, 2014). This jurisdictional balancing is highlighted by the 2018 CAO High Seas Fisheries Agreement, which is the first North Polar agreement with Arctic and non-Arctic states involving an official translation in an Asian language.

From more than 173,000,000 AIS records with 21005 unique ships across the Arctic Ocean, in the CAO High Seas there were 185 vessels during the 2009-2018 observation period (Fig. 1). As the corpus for the subsequent analyses of this chapter, these vessels were cross-validated in view of their identities and operational characteristics (IMO 2020b) as well as further confirmed in relation to their transit histories (MyShipTracking 2020). This dataset of IMO-registered vessels with Class-A transponders (NAVCEN 2019) is interpreted herein with vessel locations and metadata from 2009-2018 (Table 3) to generate the first comprehensive assessment about the socioeconomic dynamics of the CAO High Seas, where maritime ship traffic represents the socioeconomics of the region in view of human activities and interests.

TABLE 3: MARITIME SHIP TRAFFIC ATTRIBUTES TO INTERPRET SOCIOECONOMIC DYNAMICS IN THE CENTRAL ARCTIC OCEAN (CAO) HIGH SEAS¹ WITH SURROUNDING EXCLUSIVE ECONOMIC ZONES (EEZ) SHOWN IN FIGURE 1

Unique Ship Designation ²		Ship Metadata Attribute ³			CAO High Seas Regional Visit		
MMSI ⁴	Ship Name ⁵	IMO ⁶	Flag ⁷	Type ⁸	Size ⁹	Dates in CAO ¹⁰	Longitudinal Positions ¹²
¹ Summary of the satellite Automatic Identification System (AIS) data for the CAO High Seas is available through the Arctic Data Center (https://arcticdata.io/) in conjunction with baseline dataset from September 1, 2009 through December 31, 2016 north of the Arctic Circle (Berkman et al. 2020a), derived from the from the Aprize satellite constellation launched by SpaceQuest Ltd. (Berkman et al. 2020b); ² From AIS data file; ³ Selected AIS metadata attributes from among those available (NAVCEN 2019); ⁴ Mobile Maritime Service Identity (MMSI) as the unique ship identifier, which would be precluded with the Arctic Ship Traffic Database (ASTD) that anonymizes records with access Levels 2 and 3 (PAME 2020b); ⁵ Ship names (which may change) were noted, but MMSI (which remains with each ship) was used to identify unique ships; ⁶ International Maritime Organization (IMO) registered ships with Class-A transponders were used to validate the AIS record; ⁷ Nation (which may change) at time of each CAO visit; ⁸ Designation of ship type directly from the AIS data file (Marine Traffic 2018), recognizing there is a different IMO schema of ship types (IHS Markit 2017); ⁹ tonnage size-classes; ¹⁰ During period; ¹¹ Longitudinal positions in the CAO High Seas.							

The composite maritime traffic pattern in the CAO High Seas from 2009-2018 is shown in relation to vessel flag states (Fig. 2), as a one of several attributes to assess ship species’ diversity, providing the granularity to assess the dynamics of the Pan-Arctic ecosystem of maritime ship traffic (Fig. 1). Other attributes that are considered herein include ship types (e.g., research, cargo, fishery and enforcement vessels) and their sizes (e.g., tonnage classes). These ship attributes are analyzed individually, but can be combined to address user-defined questions with international and interdisciplinary inclusion. The spatial distribution of ships from all nations is circumpolar, but national activities of Arctic coastal states do seem to predominate adjacent to their respective jurisdictions, notably in parallel with Canada and Russia. Higher diversity of flag states is suggested with vessels in the vicinity of the Beaufort and Chukchi Seas.

CHAPTER 24

Different types of ship movements are indicated in Figure 2, as with direct transit lines to the North Pole, where the 'Barneo Ice Camp' operated seasonally from 2002-2018 (Barneo 2020). Various shipping patterns (e.g., rectangular zig-zag across extended region, tight zigzag in confined region or two-ship parallel transits) also are revealed, relating to types of maritime activities, as with research or fishing that could be further quantified (Visalli et al. 2020). Moreover, transits of individual ships can be investigated over time as with the 2009-2016 voyages of the German *Polarstern* (Berkman et al. 2020a), with its epic MOSAiC (*Multidisciplinary drifting Observatory for the Study of Arctic Climate*) expedition in the CAO High Seas during September 2019 to September 2020 (MOSAiC 2020).

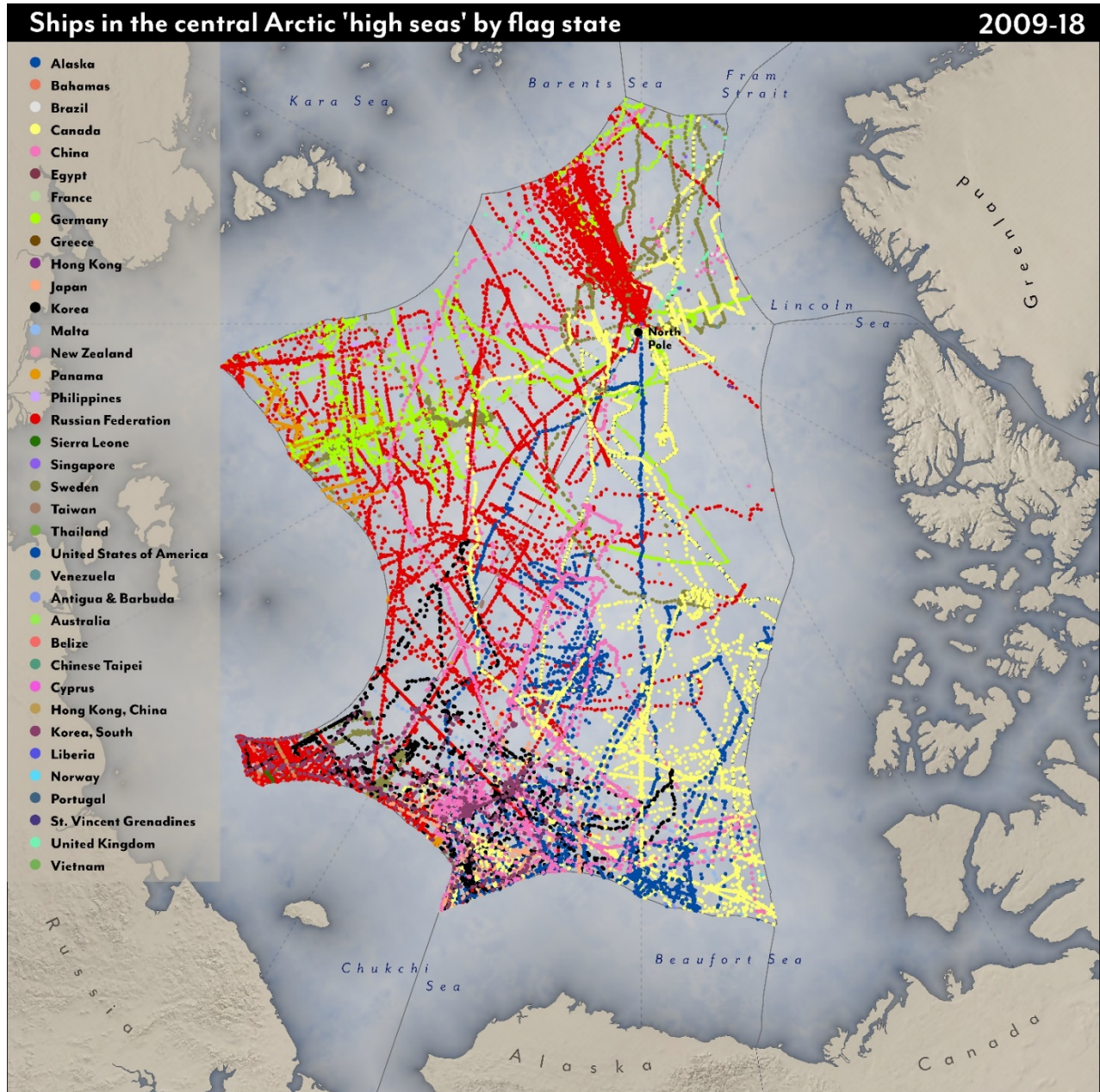


FIGURE 2: COMMUNITY OF MARITIME SHIP TRAFFIC IN THE CAO HIGH SEAS based on the composite of vessel flag states (Table 3) with distinct ship tracks from 1 September 2009 to 31 December 2018 (see legend). These data have been cross-checked with the Arctic Ship Traffic Database (ASTD) to confirm, for example, that Norwegian flagged vessels were absent in the CAO High Seas until 2019. See Figure 1 for additional East-West orientation around Arctic Ocean longitudes.

CHAPTER 24

In addition to patterns of vessel flag states over the CAO High Seas (Fig. 2) – across ice-covered and open-water areas with different extents annually (NSIDC 2020) – the number of nations operating in this international space has been trending upward (Fig. 3). Further elaboration of the 30 flag states with the vessels in the CAO High Seas from 2009-2018 are shown in Figure 4, raising questions about the relative number of ships from Arctic states as well as the presence of vessels flagged from non-Arctic states.

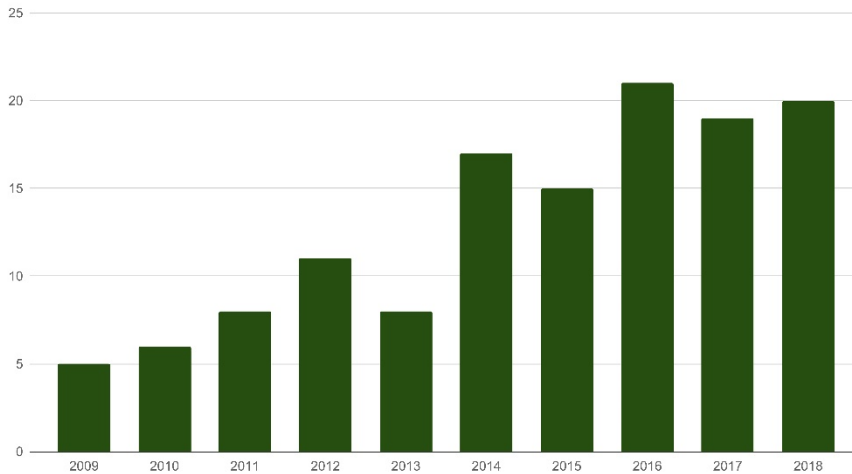


FIGURE 3: INTERNATIONAL PRESENCE AND DYNAMICS OF THE MARITIME SHIP TRAFFIC COMMUNITY IN THE CAO HIGH SEAS (FIG. 2) based on the number of vessel flag states (Table 2) annually from 1 September 2009 to 31 December 2018. These data have been cross-checked and are in close agreement with independent data collected for the Arctic Ship Traffic Database (ASTD). The Y-axis is the number of ships.

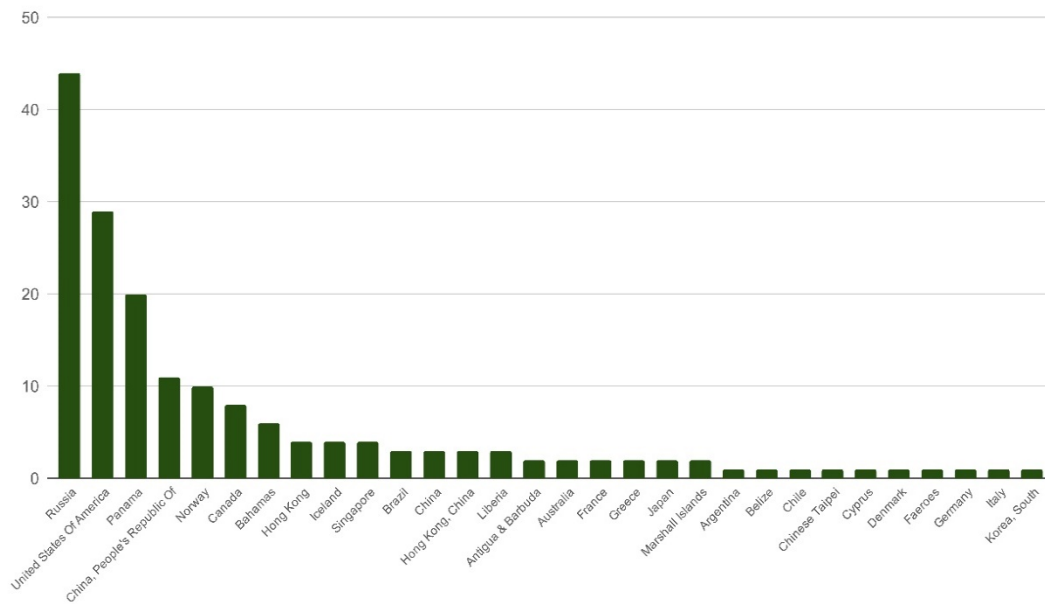


FIGURE 4: INTERNATIONAL CHARACTERISTICS OF THE MARITIME SHIP TRAFFIC COMMUNITY IN THE CAO HIGH SEAS (FIG. 2) based on the diversity of flag states (Table 2) among the 185 vessels across the period from 1 September 2009 to 31 December 2018. The Y-axis is the number of ships.

2.3. Socioeconomic Trends and Characteristics in the CAO High Seas

The diverse international presence of ships (Figs. 3-4) underlies investments with institutions that enabled their operation in the CAO High Seas. There also are associated questions about risk-management that were part of the decisionmaking. With additional granularity for decisionmaking with built infrastructure (Berkman et al 2020c, Berkman 2020), it is clear the number of ship types (Table 3) also has been increasing annually in the CAO High Seas (Fig. 5), noting a jump in 2014, with two dozen

CHAPTER 24

vessel types recorded from 2009-2016 (Fig. 6). Independent ASTD analyses (Jon Arve Røyset personal communication October 2020) indicate that many of the unspecified ships are research vessels of different types. The importance of consistent international strategies with ship-type designations, which is recognized to be a complex challenge (IHS Markit 2017), are herein highlighted for regional and inter-annual comparisons that contribute to informed decisionmaking.

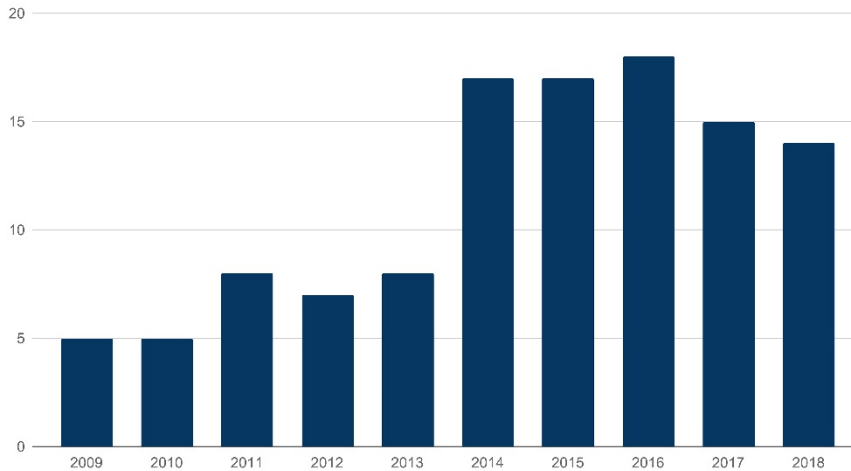


FIGURE 5: SOCIOECONOMIC TRENDS OF THE MARITIME SHIP TRAFFIC COMMUNITY IN THE CAO HIGH SEAS (FIG. 2) based on the number of ship types (Table 3) annually from 1 September 2009 to 31 December 2018. The Y-axis is the number of ships.

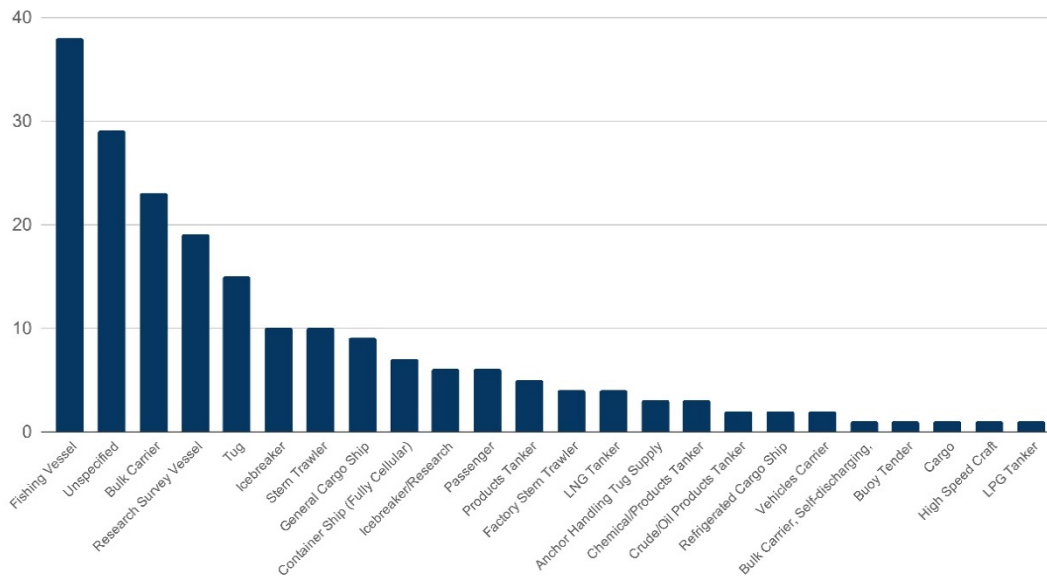


FIGURE 6: SOCIOECONOMIC CHARACTERISTICS OF THE MARITIME SHIP TRAFFIC COMMUNITY IN THE CAO HIGH SEAS (FIG. 2) based on the diversity of vessel types (Table 3) among the 185 vessels across the period from 1 September 2009 to 31 December 2018. The Y-axis is the number of ships.

The socioeconomic dimensions, capacities and dynamics in the CAO High Seas (as elsewhere across the Arctic Ocean) are reflected by ship characteristic (Figs. 5-6) and their national relationships (Figs. 3-4), noting there are “flags of convenience” that complicate any assessments attributed to national activities. It is further noted that additional financial, geopolitical and logistic analyses will be required to produce rigorous socioeconomic interpretations with next-generation Arctic marine shipping assessments (Table 1), as interpreted in view of opening of the Transpolar Sea Route (Bennett et al. 2020).

A fundamental ship type for the Arctic Ocean is the icebreaker with its various classes, involving an international fleet size of 94 vessels in 2017 (USCG 2017), indicating about a third of the world icebreaker fleet was operating in the CAO High Seas during the observation period (Fig. 6). Distinct from ice-strengthened vessels, icebreakers are designed for operations that include escorts, search-and-rescue and other emergency responses as well as maritime domain awareness. As the most seaworthy vessels for the Arctic Ocean, can this international icebreaker fleet be better coordinated to implement the emergency-response agreements in force with all of the Arctic states in the Arctic Ocean, notably the 2011 *Agreement on Cooperation on Aeronautical and Maritime Search and Rescue in the Arctic* (Arctic SAR Agreement 2011) and 2013 *Agreement on Cooperation on Marine Oil Pollution Preparedness and Response in the Arctic* (Arctic MOPP Agreement 2013)? Addressing this question is an example of where data can be integrated into evidence (Equation 1) for decisions in view of relevant institutions in the CAO High Seas as well as elsewhere in the Arctic Ocean.

Satellite AIS data facilitate holistic integration with diverse user-defined questions to transform data into evidence, stimulating research and action that contribute to informed decisionmaking. While it is beyond the scope of this chapter, synoptic analyses based on the characteristics of the vessels and their movements could contribute to informed decisions with next-generation Arctic marine shipping assessment (Table 1), identifying questions of common concern to address: black-carbon production; ship strikes on marine mammals; noise pollution; introduction of invasive species; or the effectiveness of existing international agreements generally. Importantly, framing such questions with holistic integration would contribute to common-interest building in the Arctic Ocean, moving beyond self-interests that commonly limit progress with decisionmaking.

In this regard, the CAO High Seas offers a potent case study, as reflected by international dialogues on *Building Common Interests in the Arctic Ocean* with the ambassadors of six then twelve nations in 2015 and 2016 (Ambassadorial Panel 2015, 2016; Pan-Arctic Options Project 2016) as stimulus for this second volume in the INFORMED DECISIONMAKING FOR SUSTAINABILITY book series. Questions enabled these dialogues in an international, interdisciplinary and inclusive manner to avoid systemic exclusion, recalling comments at the 2016 dialogue from the Foreign Minister of Iceland regarding “*their concern about a unilateral declaration of five states regarding prevention of unregulated commercial fishing in the Central Arctic Ocean*” (Alfreðsdóttir 2016). The lesson is that questions of common concern build common interests among allies and adversaries without being prescriptive to enable progress with sustainable development (United Nations 1987, 2015), which is a “common” Arctic issue (Ottawa Declaration 1996).

3. CAO SHIP TRAFFIC COUPLING WITH SEA ICE

3.1 Ship-Ice Patterns and Trends in the CAO High Seas

Satellite sea-ice data from the National Snow and Ice Data Center (NSIDC 2020), covering the same region and period as the satellite AIS data in the CAO High Seas (Fig. 2), were integrated into the space-time cube (see above) to analyze ship-ice interactions (Berkman et al. 2020a). These ship-ice interactions represent ship occurrences within 4 km² bins that contain ice, quantified on a daily basis. Complementing

overall trends with maritime ship traffic north of the Arctic Circle from 2009-2016 (Berkman et al. 2020a), ship-ice interactions during this same period increased toward higher latitudes just in the CAO High Seas (Fig. 7).

These satellite sea-ice and ship-traffic data further reflect a jump in 2014 (Fig. 5) with the coupled biophysical and socioeconomic dynamics of the CAO High Seas system. The two-dimensional pattern of ship-ice interactions in the CAO High Seas is essentially the same as shown with the track lines of different nations (Fig. 2), as might be expected since most of the region remains ice-covered throughout the year, even in the most extreme years.

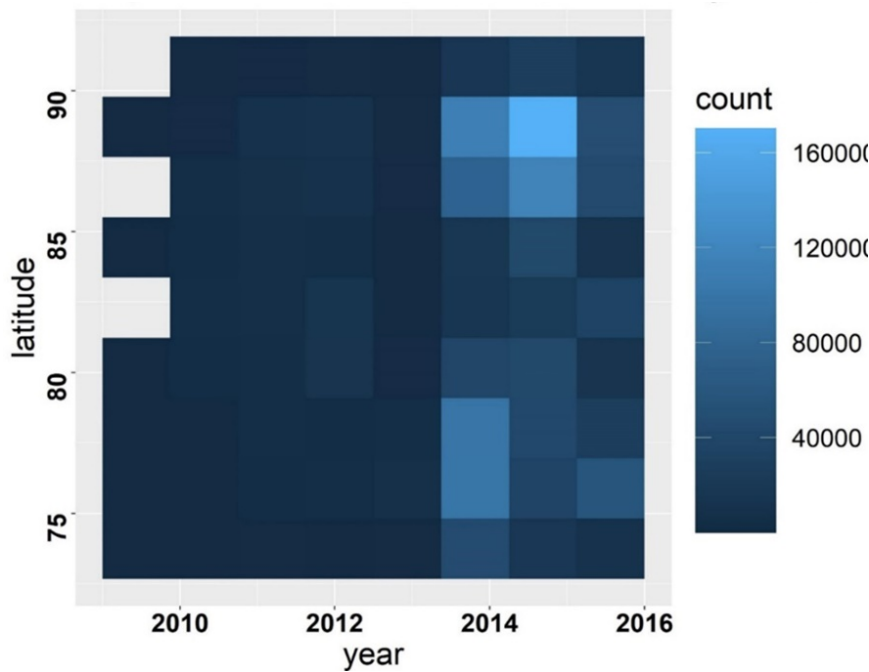


FIGURE 7: SHIP-ICE INTERACTIONS ASSOCIATED WITH THE DYNAMICS OF THE MARITIME SHIP TRAFFIC COMMUNITY IN THE CAO HIGH SEAS (FIG. 2) assessed within 4km² grids daily from 1 September 2009 to 31 December 2016 based on satellite sea-ice and ship-traffic data, as analyzed previously for the entire maritime region north of the Arctic Circle (Berkman et al. 2020a).

3.2 Testing the ‘Ship-Ice Hypothesis’ in the CAO High Seas

A central contribution of this chapter is applying the CAO High Seas as a regional test of the ‘ship-ice hypothesis’ that Arctic ship traffic is increasing as sea-ice is diminishing (Berkman et al. 2020a). Without falsifying the hypothesis, assessment in the CAO High Seas (Fig. 7) suggests a trend of increasing ship traffic toward higher latitudes in the Arctic Ocean over time, as has been predicted (Smith and Stephenson 2013, Norwegian Environment Agency 2014, Stephenson and Smith 2015, Stephenson et al. 2018).

However, with the CAO High Seas, the East-West directionality of maritime ship traffic also can be assessed within longitudinal sectors in a circumpolar context surrounding the North Pole. More specifically, the CAO High Seas offers a unique regional test of the ship-ice hypothesis because diminished sea-ice and open-water predominate only the Beaufort Sea and Chukchi Sea sectors (Thompson et al. 2015, Armitage et al. 2020), adjacent to the 180° EW meridian. Consequently, a corollary of the ‘ship-ice hypothesis’ is that maritime ship traffic (i.e., socioeconomic activity) in the CAO High Seas will predominate from the Pacific Ocean rather than from the Atlantic Ocean, even though vessels north of the Arctic Circle predominate in the EEZ connected to the North Atlantic (Fig. 1, Table 2).

CHAPTER 24

Test of the ‘ship-ice hypothesis’ is characterized by vessel numbers and diversities within adjacent polygons to reveal any 30° sectoral trends during the 2009-2016 period. Within the area of the CAO High Seas, international presence predominates in the Pacific Arctic sectors (Fig. 8), centering along the 180° EW meridian, adjacent to the Bering Strait. This maritime-traffic directionality literally is 180° offset from the majority of shipping north of the Arctic Circle, which is in the Barents Sea (Fig. 1), where there is open water, as noted above in view of the *Polar Code* implementation. Concentrated international maritime ship traffic in the Pacific Arctic sectors of the CAO High Seas also is independent of national origin.

The Bering Strait is particularly important as the choke point of maritime ship traffic into and out of the Arctic Ocean (Rothwell 2017), where the north-south transit gap is only 47 kilometers wide at its narrowest point in the Pacific Arctic sectors along the 180° EW meridian (WWF 2020). Along this maritime boundary region with the Russian Federation and United States (Berkman et al. 2016, Young et al. 2020), “two-way routes” and “precautionary areas” have been established for ship traffic (IMO 2017b). Implications of maritime ship traffic dominating in the Pacific Arctic sectors of the CAO High Seas (Fig. 8) also relates to implementation of the “precautionary approach” (Pan and Huntington 2016, Harrison et al. 2020) intended with the CAO High Seas Fisheries Agreement:

“precautionary conservation and management measures as part of a long-term strategy to safeguard healthy marine ecosystems and to ensure the conservation and sustainable use of fish stocks.”

Transforming these data into evidence (Equation 1) relates to the CAO High Seas Fisheries Agreement as well as ship-traffic governance mechanisms and built infrastructure that are being considered specifically for the Bering Strait Region (CMTS 2019).

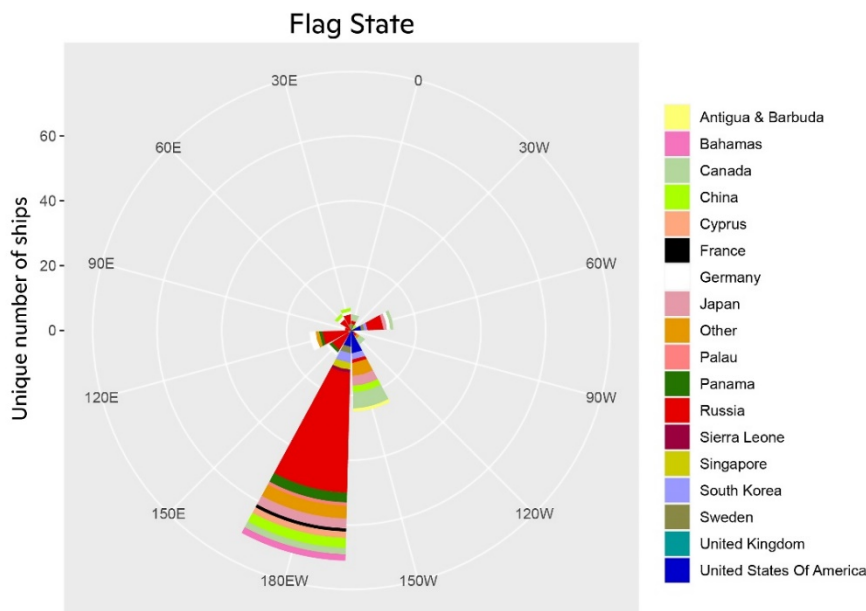


FIGURE 8: ‘SHIP-ICE HYPOTHESIS’ TEST WITH MARITIME SHIP TRAFFIC POPULATIONS IN THE CAO HIGH SEAS (FIG. 2) BASED ON THE DISTRIBUTION OF SHIP FLAG STATES (FIGS. 3-4) FROM MMSI RECORDS (TABLE 3) ACROSS 30° MERIDIONAL SECTORS SURROUNDING THE NORTH POLE. SEE FIGURE 1 FOR EAST-WEST ORIENTATION AROUND ARCTIC OCEAN LONGITUDES WITH 0°EW IN THE BARENTS SEA TO 180°EW THROUGH THE BERING STRAIT.

As shown in a circumpolar context (Figs. 2 and 9), icebreaker movements exist across all sectors of the CAO High Seas, as would be expected because they are designed to move in ice-covered areas. Conversely, less ice-worthy vessels would be expected to be more restricted in their movements, where

sea ice is diminished, which is the case in the CAO High Seas sectors in the vicinity of the Beaufort and Chukchi Seas (Fig. 9), supporting the ‘ship-ice hypothesis’ and its corollary above. Moreover, with commercial considerations of harvesting living resources in the CAO High Seas, it also would be expected that fishing vessels may be present in the open water areas, even for exploratory purposes as shown. Ship sizes additionally reveal directionality with small tonnage ships only appearing in the Beaufort Sea region of the CAO High Seas (Fig. 10).

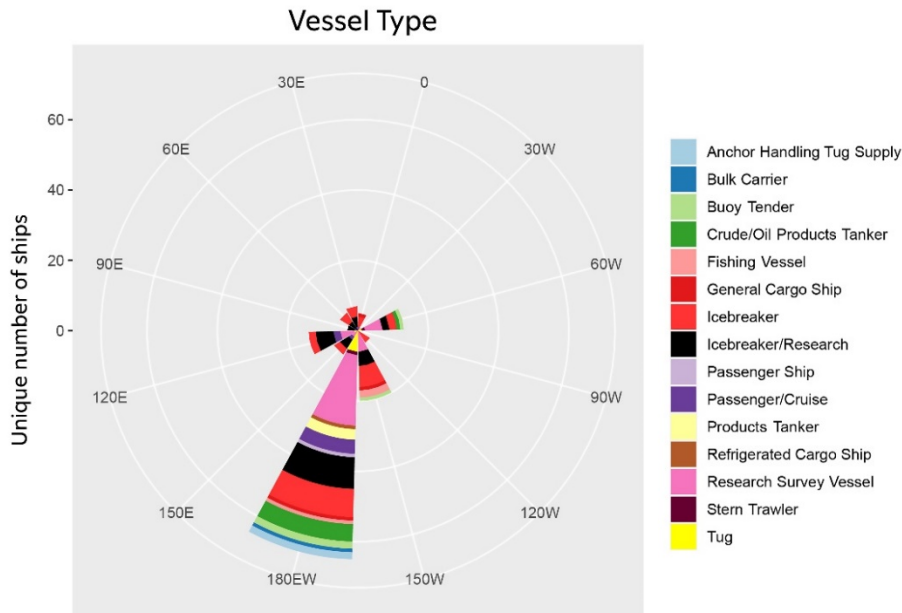


FIGURE 9: ‘SHIP-ICE HYPOTHESIS’ TEST WITH MARITIME SHIP TRAFFIC POPULATIONS IN THE CAO HIGH SEAS (FIG. 2) BASED ON THE DISTRIBUTION OF SHIP TYPES (FIGS. 5-6) FROM MMSI RECORDS (TABLE 3) ACROSS 30° MERIDIONAL SECTORS SURROUNDING THE NORTH POLE. SEE FIGURE 1 FOR EAST-WEST ORIENTATION AROUND ARCTIC OCEAN LONGITUDES WITH 0°EW IN THE BARENTS SEA TO 180°EW THROUGH THE BERING STRAIT.

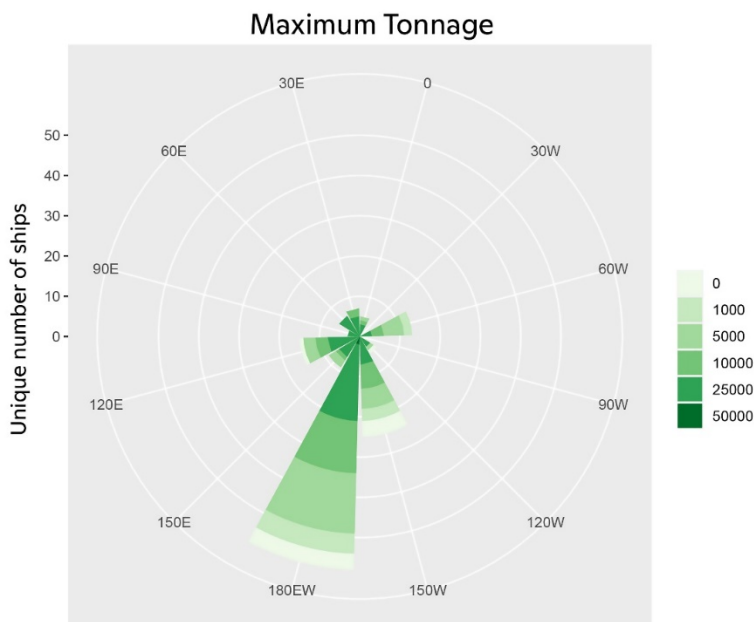


FIGURE 10: ‘SHIP-ICE HYPOTHESIS’ TEST WITH MARITIME SHIP TRAFFIC POPULATIONS IN THE CAO HIGH SEAS (FIG. 2) BASED ON THE DISTRIBUTION OF SHIP SIZE-CLASSES FROM MMSI RECORDS (TABLE 3) ACROSS 30° MERIDIONAL SECTORS SURROUNDING THE NORTH POLE. SEE FIGURE 1 FOR EAST-WEST ORIENTATION AROUND ARCTIC OCEAN LONGITUDES WITH 0°EW IN THE BARENTS SEA TO 180°EW THROUGH THE BERING STRAIT.

Together, ship densities and diversities among meridional sectors, based on the characteristics of the maritime ship traffic, increase with diminishing sea ice in the CAO High Seas surrounding the North Pole (Figs. 10-12). As a practical outcome, testing the ‘ship-ice hypothesis’ connects the socioeconomic

and biophysical systems of the Arctic Ocean. Ultimately, next-generation Arctic marine shipping assessments (Table 1) reinforce the necessity of a “*precautionary approach*” to produce informed decisions across a ‘continuum of urgencies’ with common-interest building (see Chapter 1 in this book) in the CAO High Seas surrounding the North Pole as a “Pole of Peace” (Gorbachev 1987; Berkman 2009b, 2012).

4. GLOBAL INCLUSION IN THE CAO HIGH SEAS

4.1 Informed Decisionmaking in the CAO High Seas

Understanding the system dynamics of species applies to marine living resources as well as ships. In this ecological context (Crowder and Norse 2008), ships are analogous to individual fish, which have populations of the same species, involving diverse interactions within communities and ecosystems. Such ship species’ interactions are represented, in part, by their feedback and intended interplay with governance mechanisms.

As a research outcome, data to test the ‘ship-ice hypothesis’ can be transformed into action for informed decisionmaking, considering the integration of evidence in view of Arctic institutions (Arctic Portal 2020). For example, these maritime ship traffic data underlie evidence that would apply to the Polar Code (IMO 2017a), introducing options (without advocacy) to consider with ship design, navigation and monitoring that may be specific to the CAO High Seas in view of the CAO High Seas Fisheries Agreement or the *United Nations Convention on the Law of the Sea* (United Nations 1982).

As noted above, the interplay with the CAO High Seas Agreement extends to institutions emerging from the International Maritime Organization (IMO 2017a) and Arctic Council (Arctic SAR Agreement 2011, Arctic MOPP Agreement 2013, Arctic Science Agreement 2017) with applications to the Arctic Ocean. The institutional interplay (Young 2002, Oberthür and Stokke 2011) also includes the Straddling Stocks Agreement (1995) and related United Nations codes of conduct (FAO 1995) as well as existing fisheries agreements that apply to the CAO High Seas (NEAFC 1980). Integration of Arctic maritime ship traffic data and biophysical data in view of these institutions illustrates what, where, when, why and how to create evidence for decisionmaking with governance mechanisms (Equation 1).

With its precautionary approach, even before entering into force, the signed CAO High Seas Fisheries Agreement already represents a platform for informed decisionmaking in an international space (Vylegzhanin et al. 2020, Young et al. 2020, Berkman et al. 2020a). More specifically, this historic agreement acknowledges the need for a “*long-term strategy to safeguard healthy marine ecosystems,*” addressing “*long-term conservation and sustainable use of living marine resources and in healthy marine ecosystems in the Arctic Ocean.*”

Informed decisionmaking in the CAO High Seas involves science broadly as the ‘study of change’ with biophysical and socioeconomic dynamics interpreted with natural and social sciences as well as Indigenous knowledge, as stated in the CAO High Seas Fisheries Agreement, desiring “*to promote the use of both scientific knowledge and indigenous and local knowledge.*” Key natural and social science organizations are involved in the CAO High Seas Fisheries Agreement, as had been suggested (Van Pelt et al. 2017), appreciating Indigenous knowledge also is being considered (Schatz 2019). Importantly, since 2016, the International Council for the Exploration of the Sea (ICES) and North Pacific Marine Science Organization (PICES) along with PAME have been coordinating the Working Group on Integrated

Ecosystem Assessment for the Central Arctic Ocean (WGICA). The ICES/PICES/PAME efforts have been generating continuous progress to interpret the rapidly changing biophysical dynamics of the CAO system (WGICA 2016, 2017, 2018, 2019, 2020). Implications of the ‘precautionary approach’ with the CAO High Seas are global, especially with precedents that will contribute to sustainable management of biodiversity beyond national jurisdictions (BBNJ 2019; De Santo et al. 2019). With the CAO High Seas Fisheries Agreement and related institutions, the “precautionary” approach or principle with short-to-long term consideration exemplifies informed decisionmaking under international law.

4.2 Common-Interest Building in the CAO High Seas

The *Convention on the High Seas* (1958) established the first international space ever on a planetary scale, promoting peace after the second world war (Berkman 2009a). Emerging from cooperation among allies and adversaries alike at the height of the cold war – the *Convention on the High Seas* now is awakening lessons from the CAO High Seas that have relevance for humanity, which still is in its infancy as a globally-interconnected civilization (Berkman 2020a,b), learning to balance national interests and common interests at local-global levels across the spectrum of subnational-national-international jurisdictions (Berkman 2019).

Lessons include socioeconomic dynamics, which can be revealed across the entire Arctic Ocean in relation to maritime ship traffic with objectivity and synoptic scope (Tables 1-3; Fig. 1), enabling cooperation, coordination and consistency. As an option (without advocacy), next-generation Arctic marine shipping assessments (Table 1) can be treated as a fundamental indicator of socioeconomic dynamics in the Pan-Arctic maritime ecosystem, as illustrated with CAO High Seas (Figs 2-10). With the CAO High Seas Fisheries Agreement, these socioeconomic data will help to implement a *Joint Program of Scientific Research and Monitoring* to address questions short-to-long term (Balton and Zagorski 2020), complementing Pan-Arctic research that is underway with the Synoptic Arctic Survey to understand the biophysical system “beyond the scope of any single nation” (Anderson et al. 2018).

At the top of the Earth, surrounded by the lands of superpowers and Indigenous peoples, the CAO High Seas is unambiguously an area beyond national jurisdictions under the international framework of the law of the sea. Building on the initiative of the five surrounding Arctic coastal states (Ilulissat Declaration 2008), the eight Arctic states and six Indigenous peoples organizations together “remain committed” to this international legal framework (Arctic Council 2013). The product of their leadership is global inclusion in the CAO High Seas (Fig. 11), where the world has shared rights and responsibilities.

With science diplomacy as an holistic process involving the skills, methods and theory of informed decisionmaking (see Chapter 1 in this book), there is a local-global opportunity to frame questions that build common interests in the CAO High Seas, recognizing the starting point determines the journey of cooperation or conflict. As another option (without advocacy), progress along the journey in the CAO High Seas could be characterized by an ‘Index of Global Inclusion’ that has yet to be designed, revealing an opportunity with hope and inspiration for the benefit of all on Earth across generations.

Ship visits to Central Arctic Ocean ‘high seas’ 2009-2018

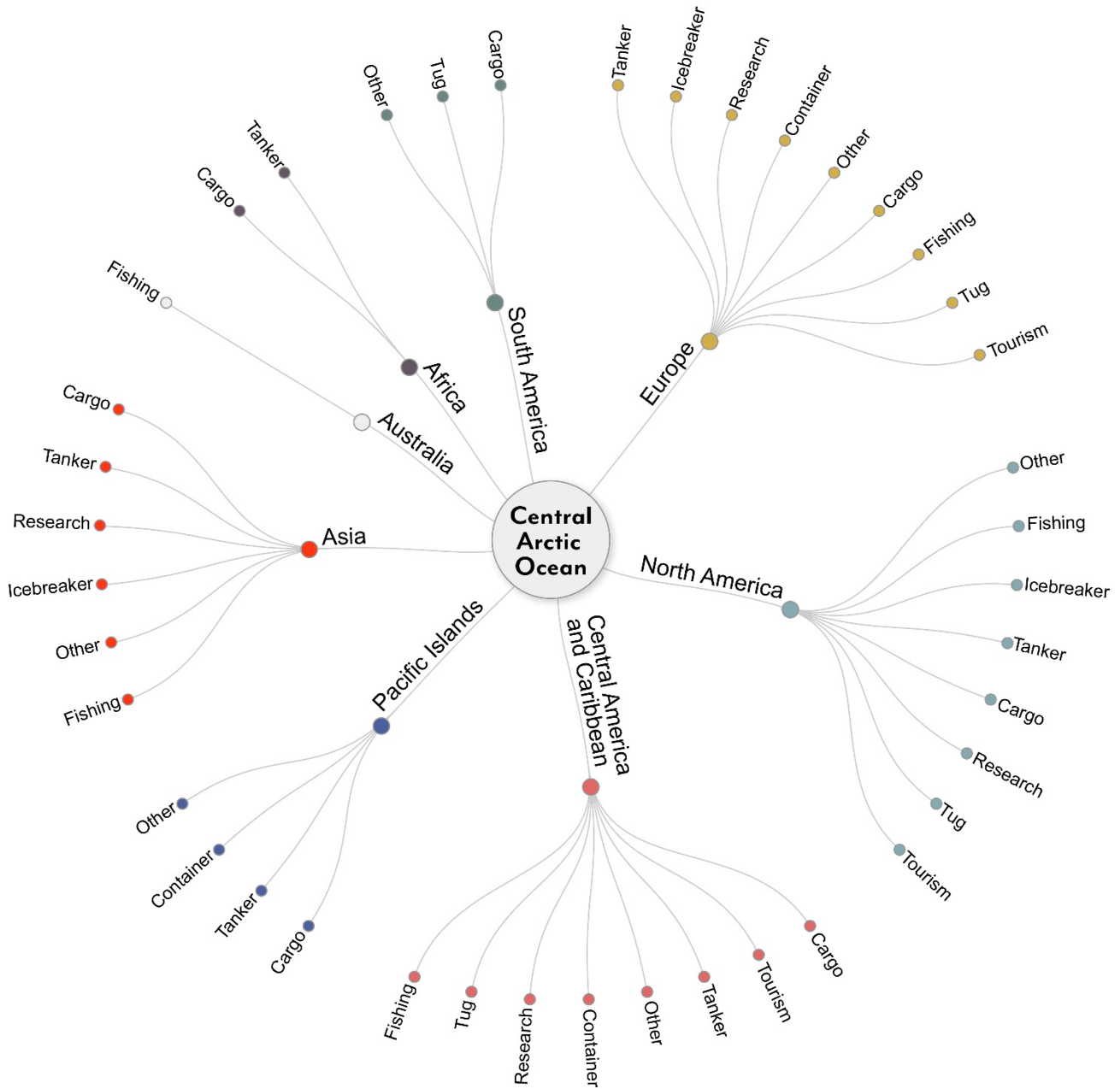


FIGURE 11: COMPLEX OF ATTRIBUTES (TABLE 3) WITH THE MARITIME SHIP TRAFFIC COMMUNITY IN THE CAO HIGH SEAS (FIG. 2), as an area beyond national jurisdictions, reflecting global inclusion based on ship types flagged from all continental regions on Earth from 2009 through 2018 (Figs. 2-10).

ACKNOWLEDGEMENTS

This article is a product of the Science Diplomacy Center, coordinated through EvREsearch LTD (previously through The Fletcher School of Law and Diplomacy at Tufts University), with support from the United States National Science Foundation (Award Nos. NSF-OPP 1263819, NSF-ICER 1660449 and NSF-OPP

CHAPTER 24

1917434). We gratefully acknowledge the thoughtful reviews by Lawson W. Brigham and by Jon Arve Røyset, who provided independent data cross-checking with the Arctic Ship Traffic Database (ASTD) coordinated by the Protection of the Arctic Marine Environment (PAME) Working Group of the Arctic Council.

REFERENCES

- Alfreðsdóttir, L. 2016. *Second Annual Ambassadorial Panel on the Arctic High Seas, Pan Arctic Options and the Reykjavik University, Reykjavik 6 October 2016. Opening Address*. Minister for Foreign Affairs of Iceland. (<https://www.stjornarradid.is/library/04-Raduneytin/Utanrikisraduneytid/PDF-skjol/Arctic-pre-event---raeda-ra%CC%81dherra.pdf>).
- Ambassadorial Panel. 2015. *Building Common Interests in the Arctic Ocean*. University of Reykjavik, Reykjavik. (<https://en.ru.is/news/arctic-high-seas-oct15>).
- Ambassadorial Panel. 2016. *Building Common Interests in the Arctic Ocean*. University of Reykjavik, Reykjavik. (<https://en.ru.is/news/building-common-interests-in-the-arctic-ocean-1>).
- AMSA. 2009. *Arctic Marine Shipping Assessment Report*. Protection of the Arctic Marine Environment (PAME) Working Group of the Arctic Council, Akureyri. (<https://pame.is/index.php/projects/arctic-marine-shipping/amsa>).
- Anderson, L.G., Ashjian, C., Azetsu-Scott, K., Bates, N.R., Carmack, E., Chierici, M., Cho, K.H., Deming, J., Edelvang, K., Gerland, S., Grebmeier, J., Hölemann, J., Itoh, M., Ivanov, V., Kang, S.H., Kassens, H., Kikuchi, T., Lien, V., Mathis, J., Novikhin, A., Olsen, A., Paasche, Ø., Schlosser, P., Swift, J., Stedmon, C., Sørensen, L.L., Titov, O., Tyrrell, T., Wilkinson, J. and Williams, B. 2018. *Synoptic Arctic Survey – A Pan-Arctic Research Program. Science and Implementation Plan*. 29 June 2018. (<https://synopticarcticsurvey.w.uib.no/science-plan/>).
- Arctic Council. 2013. *Vision for the Arctic*. Arctic Council Secretariat, Kiruna, Sweden. 15 May 2013.
- Arctic Council. 2020. *Exploring the Arctic Ocean: The Agreement that Protects an Unknown Ecosystem*. *Arctic Council News*. (<https://arctic-council.org/en/news/exploring-the-arctic-ocean-the-agreement-that-protects-an-unknown-ecosystem/>).
- Arctic MOPP Agreement. 2013. *Agreement on Cooperation on Marine Oil Pollution Preparedness and Response in the Arctic*. Signed: Kiruna, 15 May 2013 by the 8 Arctic States; Entry into Force: 25 March 2016. (<https://oaarchive.arctic-council.org/handle/11374/529>).
- Arctic Portal. 2020. *Arctic Policies Database*. (<https://arcticportal.org/arctic-governance/arctic-policies-database>).
- Arctic SAR Agreement. 2011. *Agreement on Cooperation on Aeronautical and Maritime Search and Rescue in the Arctic* Signed: Nuuk, 12 May 2011 by the 8 Arctic States; Entry into Force: 19 January 2013. (<https://oaarchive.arctic-council.org/handle/11374/531>).
- Arctic Science Agreement. 2017. *Agreement on Enhancing International Arctic Scientific Cooperation*. Signed: Fairbanks, 11 May 2017 by the 8 Arctic States; Entry into Force: 23 May 2018. (<https://oaarchive.arctic-council.org/handle/11374/1916>).

CHAPTER 24

- Armitage, T.W.K., Manucharyan, G.E., Petty, A.A., Kwok, R., Thompson, A.F. 2020. Enhanced Eddy Activity in the Beaufort Gyre in Response to Sea Ice Loss. *Nature Communications* 11:761. (<https://www.nature.com/articles/s41467-020-14449-z>).
- Ashjian, C. et al. 2019. Synoptic Arctic Survey. Report of the Open Planning Workshop, May 15-16, 2019. Woods Hole Oceanographic Institution, Woods Hole, Massachusetts, USA, 37 pp. (https://web.whoi.edu/sas2019/wp-content/uploads/sites/130/2019/09/2019_SAS_Workshop_WoodsHole.pdf)
- Balton, D.A. and Zagorski, A. 2020. *Implementing Marine Management in the Arctic Ocean*. Russian International Affairs Council, Moscow and Wilson Center, Washington, DC. (<https://www.wilsoncenter.org/publication/implementing-marine-management-arctic-ocean>).
- Barneo. 2020. Barneo Ice Camp. (<http://campbarneo.com/>).
- BBNJ. 2019. *Revised Draft Text of an Agreement under the United Nations Convention on the Law of the Sea on the Conservation and Sustainable Use of Marine Biological Diversity of Areas Beyond National Jurisdiction*. United Nations General Assembly, New York (<https://undocs.org/en/a/conf.232/2020/3>).
- Bennett, M.M., Stephenson, S.R., Yang, K., Bravo, M.T. and De Jonghe, B. 2020. The opening of the Transpolar Sea Route: Logistical, geopolitical, environmental, and socioeconomic impacts. *Marine Policy*. In press. (<https://doi.org/10.1016/j.marpol.2020.104178>)
- Berkman, P.A. 2009a. International Spaces Promote Peace. *Nature* 462:412-413. (<https://www.nature.com/articles/462412a>).
- Berkman, P.A. 2009b. North Pole as a Pole of Peace. *The Circle* 1:14-17. (<https://wwfeu.awsassets.panda.org/downloads/thecircle0109.pdf>).
- Berkman, P.A. 2012 Our Common Future in the Arctic Ocean. *The Round Table* 101(02):123-135. (<https://www.tandfonline.com/doi/abs/10.1080/00358533.2012.661527>).
- Berkman, P.A. 2010. Integrated Arctic Ocean Governance for the Lasting Benefit of All Humanity. IN: Wolfrum, R. (ed.). *NEW CHALLENGES AND NEW RESPONSIBILITIES IN THE ARCTIC REGION*, Max Planck Institute, Heidelberg. Pp. 187-194.
- Berkman, P.A. 2014. Stability and Peace in the Arctic Ocean through Science Diplomacy. *Science & Diplomacy*. June 2014: 26-35. (<https://www.sciencediplomacy.org/perspective/2014/stability-and-peace-in-arctic-ocean-through-science-diplomacy>).
- Berkman, P.A. 2020a. Science Diplomacy and its Engine of Informed Decisionmaking: Operating Through Our Global Pandemic with Humanity. *The Hague Journal of Diplomacy* 15:435-450. (https://brill.com/view/journals/hjd/15/3/article-p435_13.xml).
- Berkman, P.A. 2020b. *The Pandemic Lens: Focusing Across Time Scales for Local-Global Sustainability*. *Patterns* 1(8). 13 November 2020. 4p. (<https://www.cell.com/action/showPdf?pii=S2666-3899%2820%2930195-1>).
- Berkman, P.A. and Vylegzhanin, A.N. 2013. Conclusions: Building Common Interests in the Arctic Ocean. IN: Berkman, P.A. and Vylegzhanin, A.N. (eds.). *ENVIRONMENTAL SECURITY IN THE ARCTIC OCEAN*. Springer, Dordrecht. Pp. 371-404.
- Berkman, P.A. and Young, O.R. 2009. Governance and Environmental Change in the Arctic Ocean. *Science* 324:339-340. (<https://science.sciencemag.org/content/324/5925/339>).
- Berkman, P.A., Vylegzhanin, A.N. and Young, O.R. 2016. Governing the Bering Strait Region: Current Status, Emerging Issues and Future Options. *Ocean Development and International Law* 47(2):186-217. (<https://www.tandfonline.com/doi/full/10.1080/00908320.2016.1159091>).

CHAPTER 24

- Berkman, P.A., Fiske, G. Røyset, J.A., Brigham, L. and Lorenzini, D. 2020a. *Chapter 11: Next-Generation Arctic Marine Shipping Assessments*. IN: Young, O.R., Berkman, P.A. and Vylegzhanin, A.N. (eds.). INFORMED DECISIONMAKING FOR SUSTAINABILITY. VOLUME 1. GOVERNING ARCTIC SEAS: REGIONAL LESSONS FROM THE BERING STRAIT AND BARENTS SEA. Springer, Dordrecht. Pp. 241-268. (https://link.springer.com/content/pdf/10.1007%2F978-3-030-25674-6_11.pdf).
- Berkman, P.A., Fiske, G. and Lorenzini, D. 2020b. *Baseline of Next-Generation Arctic Marine Shipping Assessments - Oldest Continuous Pan-Arctic Satellite Automatic Identification System (AIS) Data Record of Maritime Ship Traffic, 2009-2016*. Arctic Data Center. (<https://arcticdata.io/catalog/view/doi%3A10.18739%2FA2D9N89Z>).
- Berkman, P.A., Young, O.R. and Vylegzhanin, A.N. 2020c. Book Series Preface: Informed Decisionmaking for Sustainability. IN: Young, O.R., Berkman, P.A. and Vylegzhanin, A.N. (eds.). INFORMED DECISIONMAKING FOR SUSTAINABILITY. VOLUME 1. GOVERNING ARCTIC SEAS: REGIONAL LESSONS FROM THE BERING STRAIT AND BARENTS SEA. Springer, Dordrecht. Pp. v-xxv. (<https://link.springer.com/content/pdf/bfm%3A978-3-030-25674-6%2F1.pdf>).
- CAO High Seas Fisheries Agreement. 2018. *Agreement to Prevent Unregulated High Seas Fisheries in the Central Arctic Ocean*. Signed: Ilulissat, 3 October 2018; Entry into Force: pending. (<https://www.mofa.go.jp/mofaj/files/000449233.pdf>).
- CMTS. 2019. *A Ten-Year Projection of Maritime Activity in the U.S. Arctic Region, 2020–2030*. U.S. Committee on the Marine Transportation System. September 2019. (https://www.cmts.gov/downloads/CMTS_2019_Arctic_Vessel_Projection_Report.pdf).
- Comiso, J. C. Frey, K., Stock, L.V., Gersten, R.A., and Mitchell, H. 2020. Satellite Visualization Data for the Distributed Biological Observatory (DBO). (<https://earth.gsfc.nasa.gov/cryo/data/distributed-biological-observatory>).
- Convention on the High Seas*. 1958. Signed: Geneva, 29 April 1958; Entry into Force: 30 September 1962. (https://www.gc.noaa.gov/documents/8_1_1958_high_seas.pdf).
- Crowder, L. and Norse, E. 2008. Essential Ecological Insights for Marine Ecosystem-Based Management and Marine Spatial Planning. *Mar. Pol.* 32:772-778. (https://mcbi.marine-conservation.org/publications/pub_pdfs/Norse_MarinePolicy_2008.pdf).
- De Santo, E.M., Áeirsdóttir, Á, A. Barros-Platiau, A., Biermann, F., Dryzek, J., Gonçalves, L.R., Kim, R.E., Mendenhall, E., Mitchell, R., Nyman, E., Scobie, M., Sun, K., Tiller, R., Webster, D.G., Young, O.R. 2019. Protecting biodiversity in areas beyond national jurisdiction: An earth system governance perspective. *Earth System Governance* 2:1-7. (<https://www.sciencedirect.com/science/article/pii/S258981161930028X>).
- Donnelly, Christl A., Ian Boyd, Philip Campbell, Claire Craig, Patrick Vallance, Mark Walport, Christopher J.M. Whitty, Emma Woods and Chris Wormald. 2018. Four Principles for Synthesizing Evidence. *Nature* 558:361-364. <https://www.ingsa.org/wp-content/uploads/2018/07/4-principles-Nature-June-2018.pdf>.
- Eguíluz, V.M., Fernández-Gracia, J., Irigoien, X. and Duarte, C.M. 2016. A quantitative assessment of Arctic shipping in 2010–2014. *Nature* 6(30682):1-6. (<https://www.nature.com/articles/srep30682>).
- Eisenmann, I. and Wettlaufer, J.S. 2009. Nonlinear threshold behavior during the loss of Arctic sea ice. *Proc. Nat. Acad. Sci.* 106:28-32 (<https://www.pnas.org/content/pnas/106/1/28.full.pdf>).

CHAPTER 24

- European Commission. 2018. *EU and Arctic partners enter historic agreement to prevent unregulated fishing in high seas*. European Commission, Brussels. 3 October 2018 (https://ec.europa.eu/fisheries/eu-and-arctic-partners-enter-historic-agreement-prevent-unregulated-fishing-high-seas_en).
- FAO. 1995. *Code of Conduct for Responsible Fisheries*. Food and Agriculture Organization of the United Nations, Rome. (<http://www.fao.org/3/v9878e/V9878E.pdf>).
- Google. 2020. BigQuery Costs. (<https://cloud.google.com/bigquery/pricing>).
- Gorbachev, M. 1987. *Speech at the Ceremonial Meeting on the Occasion of the Presentation of the Order of Lenin and the Gold Star to the City of Murmansk*. 1 October 1987. (English translation prepared by the Press Office of the Embassy of the Soviet Union, Ottawa 1988).
- Harrison, P., Shin, H.C., Huntington, H.P., Balton, D., Benton, D., Min, P., Fujio, O., Peiqing, G., Grebmeier, J.M., Highleyman, S., Jakobsen, A., Meloche, M., Romanenko, O., Zilanov, V.K.. 2020. How Non-Government Actors Helped the Arctic Fisheries Agreement. *Polar Perspectives* 2 (October 2020). (<https://www.wilsoncenter.org/publication/polar-perspectives-no-2-how-non-government-actors-helped-arctic-fisheries-agreement>).
- IHS Markit. 2017. *StatCode 5 Shiptype Coding System. A Categorisation of Ships by Type-Cargo Carrying Ships*. (<https://cdn.ihs.com/www/pdf/Statcode-Shiptype-Coding-System.pdf>).
- Ilulissat Declaration. 2008. *Declaration from the Arctic Ocean Conference*, 28 May 2008. Ilulissat, (<https://arcticportal.org/images/stories/pdf/Ilulissat-declaration.pdf>).
- IMO. 2017a. *International Code for Ships Operating in Polar Waters (Polar Code)*. Marine Environmental Protection Committee, MEPC 68/21/Add. 1, Annex 10. International Maritime Organization. Entry into Force 1 January 2017. (<http://www.imo.org/en/MediaCentre/HotTopics/polar/Pages/default.aspx>).
- IMO. 2017b. *Routeing Measures and Mandatory Ship Reporting Systems. Establishment of two-way routes and precautionary areas in the Bering Sea and Bering Strait*. Submitted by the Russian Federation and the United States. Sub-Committee on Navigation, Communications and Search and Rescue. International Maritime Organization. (NCSR 5/3/7, 17 November 2017). (https://www.navcen.uscg.gov/pdf/imo/ncsr_5_3_7.pdf).
- IMO. 2020a. *AIS Transponders*. International Maritime Organization (<http://www.imo.org/en/OurWork/Safety/Navigation/Pages/AIS.aspx>).
- IMO. 2020b. *Global Integrated Shipping Information System*. International Maritime Organization. (<https://gisis.imo.org/Public/Default.aspx>).
- Marine Traffic. 2018. What is the significance of the AIS Shiptype number? (<https://help.marinetraffic.com/hc/en-us/articles/205579997-What-is-the-significance-of-the-AIS-Shiptype-number->).
- MOSAiC. 2020. Multidisciplinary drifting Observatory for the Study of Arctic Climate (<https://mosaic-expedition.org/>).
- MyShipTracking. 2020. (<https://www.myshiptracking.com/>).
- NASA Earth Observatory. 2018. Shipping responds to Arctic Ice Decline. National Aeronautics and Space Administration. (<https://earthobservatory.nasa.gov/images/91981/shipping-responds-to-arctic-ice-decline>).
- NAVCEN. 2016. *Navigation Center: Automatic Identification System. How it Works*. United States Coast Guard. (<https://www.navcen.uscg.gov/?pageName=AISworks>).

- NAVCEN. 2019. *Navigation Center: Automatic Identification System. AIS Messages*. United States Coast Guard. (<https://www.navcen.uscg.gov/?pageName=AIMessages>).
- NEAFC. 1980. *Convention on Future Multilateral Cooperation in North-East Atlantic Fisheries*. Signed: London, 18 November 1980; Entry into Force. 17 March 1982. (<https://www.neafc.org/system/files/Text-of-NEAFC-Convention-04.pdf>).
- Norwegian Environment Agency. 2014. Specially Designated Marine Areas in the Arctic High Seas. *Report No./DNV Reg No.: 2013-1442 / 17JTM1D-26 Rev 2*. (<https://www.pame.is/index.php/document-library/shipping-documents/arctic-marine-shipping-assessment-documents/recommendation-iiid/343-specially-designated-marine-areas-in-the-arctic-part-ii/file>).
- NSIDC. 2020. Arctic Sea Ice News and Analysis. National Snow and Ice Data Center. (<http://nsidc.org/arcticseaicenews/>).
- Oberthür, S. and Stokke, O.S. (eds.). 2011. *MANAGING REGIME COMPLEXITY: REGIME INTERPLAY AND GLOBAL ENVIRONMENTAL CHANGE*. MIT Press, Cambridge.
- Ottawa Declaration. 1996. *Declaration on the establishment of the Arctic Council*. Signed 19 September 1996, Ottawa. (<https://oarchive.arctic-council.org/handle/11374/85>)
- Paasche, Ø., Olsen, A., Årthun, M., Anderson, L.G., Wängberg, S.A., Ashjian, C.J., Grebmeier, J.M., Kikuchi, T., Nishino, S., Yasunaka, S., Kang, S.H., Cho, K.H., Azetsu-Scott, K., Williams, W.J., Carmack, E., Torres-Valdés, S., Tyrrell, T., Edelvang, K., He, J. and Kassens, H.M. 2019. Addressing Arctic Challenges Requires a Synoptic Ocean Survey. *Transactions of the American Geophysical Union (EOS)*, 19 November 2019. (<https://eos.org/opinions/addressing-arctic-challenges-requires-a-synoptic-ocean-survey>).
- PAME. 2020a. Arctic Ships Status Report (ASSR) #1. The Increase in Arctic Shipping 2013-2019. Protection of the Arctic Marine Environment Working Group, Akureyri (<https://www.pame.is/projects/arctic-marine-shipping/arctic-shipping-status-reports/723-arctic-shipping-report-1-the-increase-in-arctic-shipping-2013-2019-pdf-version/file>).
- PAME. 2020b. ASTD Data. The Cooperative Agreement among the Arctic States Regarding Arctic Ship Traffic Data (ASTD) Sharing. Protection of the Arctic Marine Environment Working Group, Akureyri. ([https://pame.is/images/03 Projects/ASTD/ASTD Data Document.pdf](https://pame.is/images/03%20Projects/ASTD/ASTD%20Data%20Document.pdf)).
- Pan, M. and Huntington, H. 2016 A precautionary approach to fisheries in the Central Arctic Ocean: Policy, Science, and China. *Mar. Pol.* 63:153-157. (<https://doi.org/10.1016/j.marpol.2015.10.015>).
- Pan-Arctic Options Project. 2016. Arctic High Seas. (<https://www.panarcticoptions.org/category/arctic-high-seas/>).
- Rothwell, D.R. 2017. *ARCTIC OCEAN SHIPPING: NAVIGATION, SECURITY AND SOVEREIGNTY IN THE NORTH*. Brill, Boston.
- Schatz, V. 2019. The Incorporation of Indigenous and Local Knowledge into Central Arctic Ocean Fisheries Management. *Arctic Rev. Law and Polit.* 10:130-134. (<https://arcticreview.no/index.php/arctic/article/view/1630/3173>).
- Smith, L.C. and Stephenson, S.R. 2013. New Trans-Arctic Shipping Routes Navigable by Midcentury. *Proc. Nat. Acad. Sci.* 110(13):E1191–E1195. (<https://www.pnas.org/content/110/13/E1191>).
- SOLAS. 2020. Annex 17. Automatic Identification System. Convention on the Safety of Life at Sea. (<http://solasv.mcga.gov.uk/Annexes/Annex17.htm>).
- Stephenson, S. R. and Smith, L.C. 2015. Influence of climate model variability on projected Arctic shipping futures. *Earth's Future* 3:331–343. (<https://doi.org/10.1002/2015EF000317>).

CHAPTER 24

- Stephenson, S.R., Wang, W., Zender, C.S., Wang, H., Davis, S.J. and Rasch, P.J. 2018. Climatic responses to future trans-Arctic shipping. *Geophys. Res. Lett.* 45:9898-9908. (<https://doi.org/10.1029/2018GL078969>)
- Stevenson, T.C., Davies, J., Huntington, H.P. and Sheard, W. 2019. An examination of trans-Arctic vessel routing in the Central Arctic Ocean. *Marine Policy* 100:83-89. (<https://www.sciencedirect.com/science/article/pii/S0308597X18307334?via%3Dihub>).
- Straddling Stocks Agreement. 1995. *Agreement for the Implementation of the Provisions of the United Nations Convention on the Law of the Sea of 10 December 1982 relating to the Conservation and Management of Straddling Fish Stocks and Highly Migratory Fish Stocks of 4 August 1995*
- Thoman, R.L., Richter-Menge, J. and Druckenmiller, M.L. (eds.). 2020. *Arctic Report Card 2020*. United States National Oceanic and Atmospheric Administration, Rockville. (https://arctic.noaa.gov/Portals/7/ArcticReportCard/Documents/ArcticReportCard_full_report2020.pdf).
- Thompson, J. Fan, Y., Stammerjohn, S., Stopa, J., Rogers, W.E., Girard-Ardhuin, F., Ardhuin, F., Shen, H., Perrie, W., Shen, H., Ackley, S., Babanin, A., Liu, Q., Guest, P., Maksym, T., Wadhams, P., Fairall, C., Persson, O., Doble, M., Graber, H., Lund, B., Squire, V., Gemmrich, J., Lehner, S., Holt, B., Meylan, M., Brozena, J., and Bidlot, J. 2016. Emerging Trends in the Sea State of the Beaufort and Chukchi Seas. *Ocean Modelling* 105:1-12. (<http://dx.doi.org/10.1016/j.ocemod.2016.02.009>).
- United Nations. 1982. *United Nations Convention on the Law of the Sea*. (Signed: Montego Bay, 10 December 1982; Entry into Force: 16 November 1994). (https://www.un.org/depts/los/convention_agreements/texts/unclos/unclos_e.pdf).
- United Nations. 1987. *Our Common Future: From One Earth to One World. Report Transmitted to the General Assembly as an Annex to Resolution A/RES/42/187*. United Nations, World Commission on Environment and Development, New York. (<https://sustainabledevelopment.un.org/content/documents/5987our-common-future.pdf>).
- United Nations. 2015. *Transforming Our World: The 2030 Agenda for Sustainable Development*. (United Nations General Assembly, New York. (<https://sustainabledevelopment.un.org/post2015/transformingourworld/publication>).
- USCG. 2017. Major Icebreakers of the World. Office of Waterways and Ocean Policy (CG-WWM). United States Coast Guard. (<https://www.dco.uscg.mil/Portals/9/DCO%20Documents/Office%20of%20Waterways%20and%20Ocean%20Policy/20170501%20major%20icebreaker%20chart.pdf?ver=2017-06-08-091723-907>).
- Van Pelt, T.I., Huntington, H.P., Romanenko, O.V. and Mueter, F.J. 2017. The Missing Middle: Central Arctic Ocean Gaps in Fishery Research and Science Coordination. *Mar. Pol.* 85:79-86. (<http://dx.doi.org/10.1016/j.marpol.2017.08.008>).
- Visalli, M.E., Best, B.D., Cabral, R.B., Cheung, W.W.L., Clark, N.A., Garilao, C., Kaschner, K., Kesner-Reyes, K., Lam, V.K.Y., Maxwell, S.M., Mayorga, J., Moeller, H.V., Morgan, L., Crespo, G.O., Pinsky, M.L., White, T.D., McCauley, D.L., 2020. Data-Driven Approach for Highlighting Priority Areas for Protection in Marine Areas Beyond National Jurisdiction. *Marine Policy* (in press). (<https://www.sciencedirect.com/science/article/pii/S0308597X19309194?via%3Dihub>).

CHAPTER 24

- Vylegzhanin, A.N., Young, O.R. and Berkman, P.A. 2020. The Central Arctic Ocean Fisheries Agreement as an Element in the Evolving Arctic Ocean Governance Complex. *Mar. Pol.* 118:1-10. (<https://doi.org/10.1016/j.marpol.2020.104001>).
- WGICA. 2016. First Interim Report of the ICES/PAME Working Group on Integrated Ecosystem Assessment for the Central Arctic Ocean (WGICA). International Council for the Exploration of the Sea, Copenhagen. (<http://www.ices.dk/sites/pub/Publication%20Reports/Expert%20Group%20Report/SSGIEA/2016/WGICA/WGICA%202016.pdf>).
- WGICA. 2017. Interim Report of the ICES/PICES/PAME Working Group on Integrated Ecosystem Assessment (IEA) for the Central Arctic Ocean (WGICA). International Council for the Exploration of the Sea, Seattle. (<http://ices.dk/sites/pub/Publication%20Reports/Expert%20Group%20Report/SSGIEA/2017/WGICA/WGICA%202017.pdf>).
- WGICA. 2018. Interim Report of the ICES/PICES/PAME Working Group for Integrated Ecosystem Assessment of the Central Arctic Ocean (WGICA). International Council for the Exploration of the Sea, Newfoundland. (<https://www.ices.dk/sites/pub/Publication%20Reports/Expert%20Group%20Report/IEASG/2018/WGICA/WGICA%202018.pdf>).
- WGICA. 2019. *ICES/PICES/PAME Working Group On Integrated Ecosystem Assessment (IEA) for the Central Arctic Ocean*. Volume 2(33). (<http://ices.dk/sites/pub/Publication%20Reports/Expert%20Group%20Report/IEASG/2019/WGICA%20report%202019.pdf>).
- WGICA. 2020. *ICES/PICES/PAME Working Group on Integrated Ecosystem Assessment (IEA) for the Central Arctic Ocean (WGICA)*. Volume 2(79). (<http://www.ices.dk/sites/pub/Publication%20Reports/Forms/DispForm.aspx?ID=36908>).
- Winther, M., Christensen, J.H., Plejdrup, M.S., Ravn, E.S., Eriksson, O.F., Kristensen, H.O. 2014. Emission inventories for ships in the arctic based on satellite sampled AIS data. *Atmos. Environ.* 91:1-14. (<https://doi.org/10.1016/j.atmosenv.2014.03.006>).
- Wright, D., Janzen, C., Bochenek, R., Austin, J. and Page, J. 2019. Marine Observing Applications Using AIS: Automatic Identification System. *Front. Mar. Sci.* 6:1-7. (<https://doi.org/10.3389/fmars.2019.00537>).
- WWF. 2020. *Safety at the Helm: A Plan for Smart Shipping through the Bering Strait*. WWF, Anchorage. (https://c402277.ssl.cf1.rackcdn.com/publications/1314/files/original/WWF_Bering_Straits_Shipping_Report_UPDATE.pdf?1588034355).
- Young, O.R., Berkman, P.A. and Vylegzhanin. (eds). 2020. INFORMED DECISIONMAKING FOR SUSTAINABILITY. VOLUME 1. GOVERNING ARCTIC SEAS: REGIONAL LESSONS FROM THE BERING STRAIT AND BARENTS SEA. Springer, Dordrecht. 358p. (<https://www.springer.com/gp/book/9783030256739>).
- Young, O.R. 2002. Institutional Interplay: The Environmental Consequences of Cross-Scale Interactions. IN: Ostrom, E. (ed.). THE DRAMA OF THE COMMONS. National Academy Press, Washington, D.C.